

TRATTORI CARRARO 23

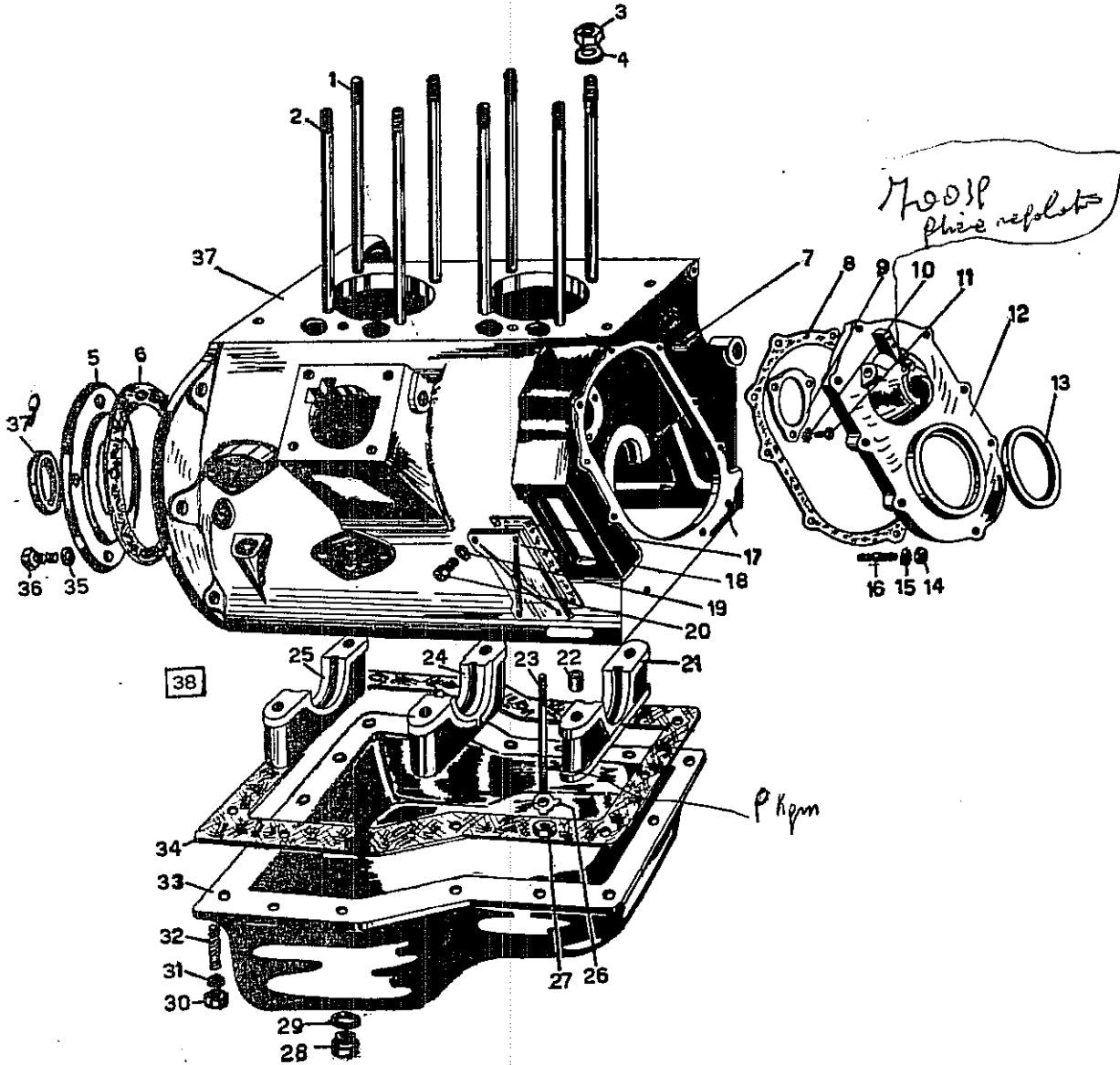
- modello Δ TRATTORE CARRARO 23 SUPER
 □ TRATTORE CARRARO 23 P
 ○ TRATTORE CARRARO 23 VIGNERON

il simbolo in ogni tavola indica il modello relativo

		Tipo
Tav. 1	- basamento e coppa olio	Δ □ ○
2	- cilindro e testata	Δ □ ○
3	- albero motore e punterie	Δ □ ○
4	- lubrificazione	Δ □ ○
5	- regolatore centrifugo	Δ □ ○
6	- alimentazione	Δ □ ○
7	- iniettore e candele	Δ □ ○
8	- raffreddamento	Δ □ ○
9	- filtro aria e collettori	Δ □ ○
10	- corpo trattore e serbatoio	Δ
11	- doppia frizione	Δ
12	- scatola del cambio	Δ □ ○
13	- ingranaggi cambio velocità	Δ □ ○
14	- comandi cambio velocità	Δ □ ○
15	- differenziale e bloccaggio	Δ □ ○
16	- ponte riduttore	Δ
17	- semiassi riduttore	Δ
18	- avantreno	Δ
19	- sterzo	Δ
20	- freni e pedali	Δ
21	- cruscotto e acceleratore	Δ
22	- carrozzeria 23 Super	Δ
23	- ruote anteriori e posteriori	Δ □ ○
24	- impianto elettrico	Δ □ ○
25	- pompa sollevamento idraulico	Δ □ ○
26	- sollevamento a doppio effetto	Δ □ ○
27	- barra di traino approvata	Δ □ ○
28	- apparecchio a tre punti	Δ □
29	- corpo trattore e trasmissione	□
30	- frizione normale	Δ □ ○
31	- ponte riduttore 23P	□
32	- avantreno 23P	□
33	- differenziale e freni	□
34	- innesti e disinnesti	□
35	- semiassi e riduttore	□
36	- sterzo	□
37	- carrozzeria 23P	□
38	- carrozzeria Vigneron	○
39	- puleggia a squadra	Δ □
40	- telaio barra falciante	Δ □
41	- barra portadenti	Δ □
42	- trasmissione e lama	Δ □

AVVERTENZA

NEL CONSULTARE IL CATALOGO, PORRE LA MASSIMA ATTENZIONE AI SIMBOLI INDICATIVI DEL MODELLO CUI CIASCUNA TAVOLA SI RIFERISCE.

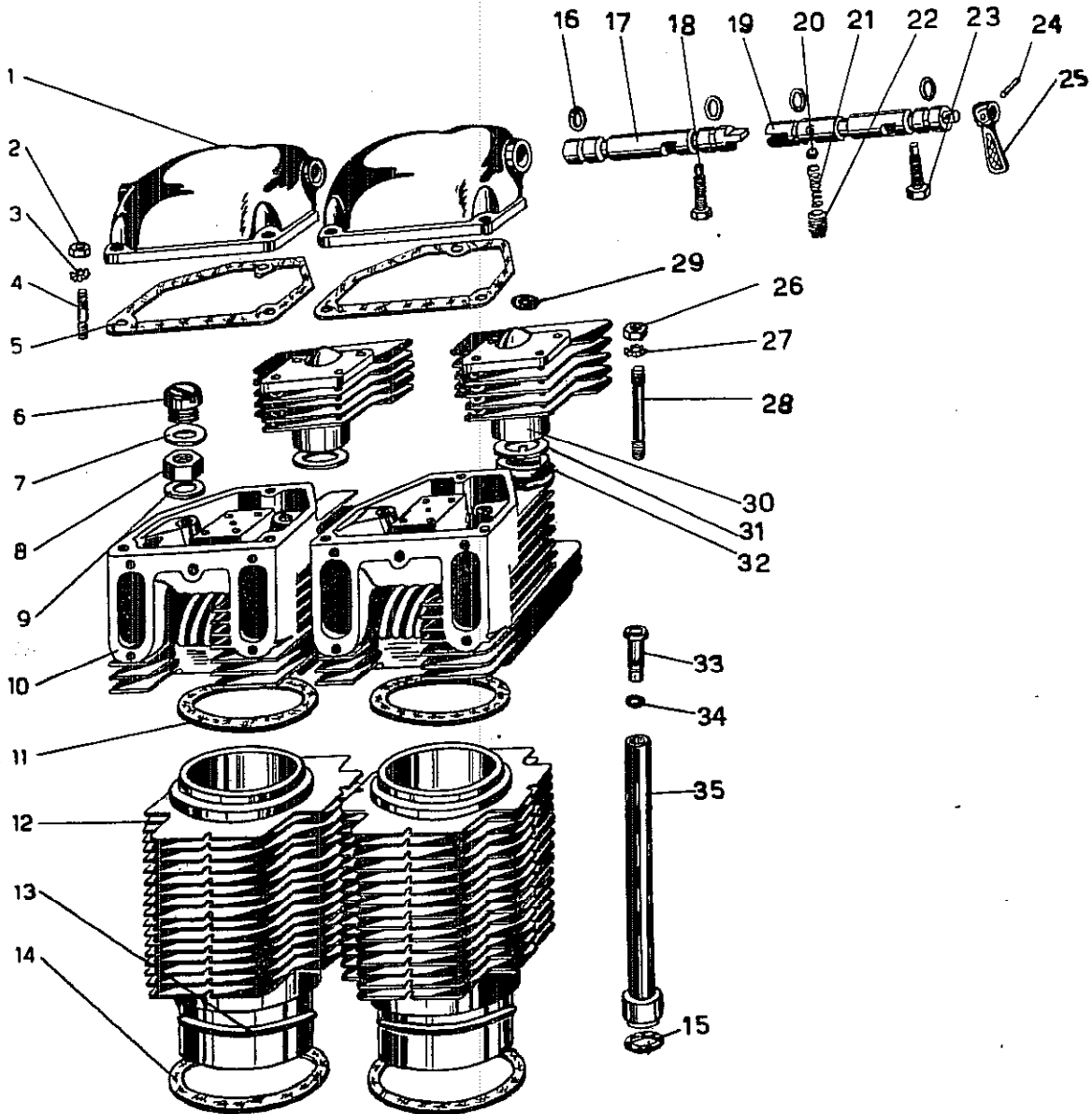


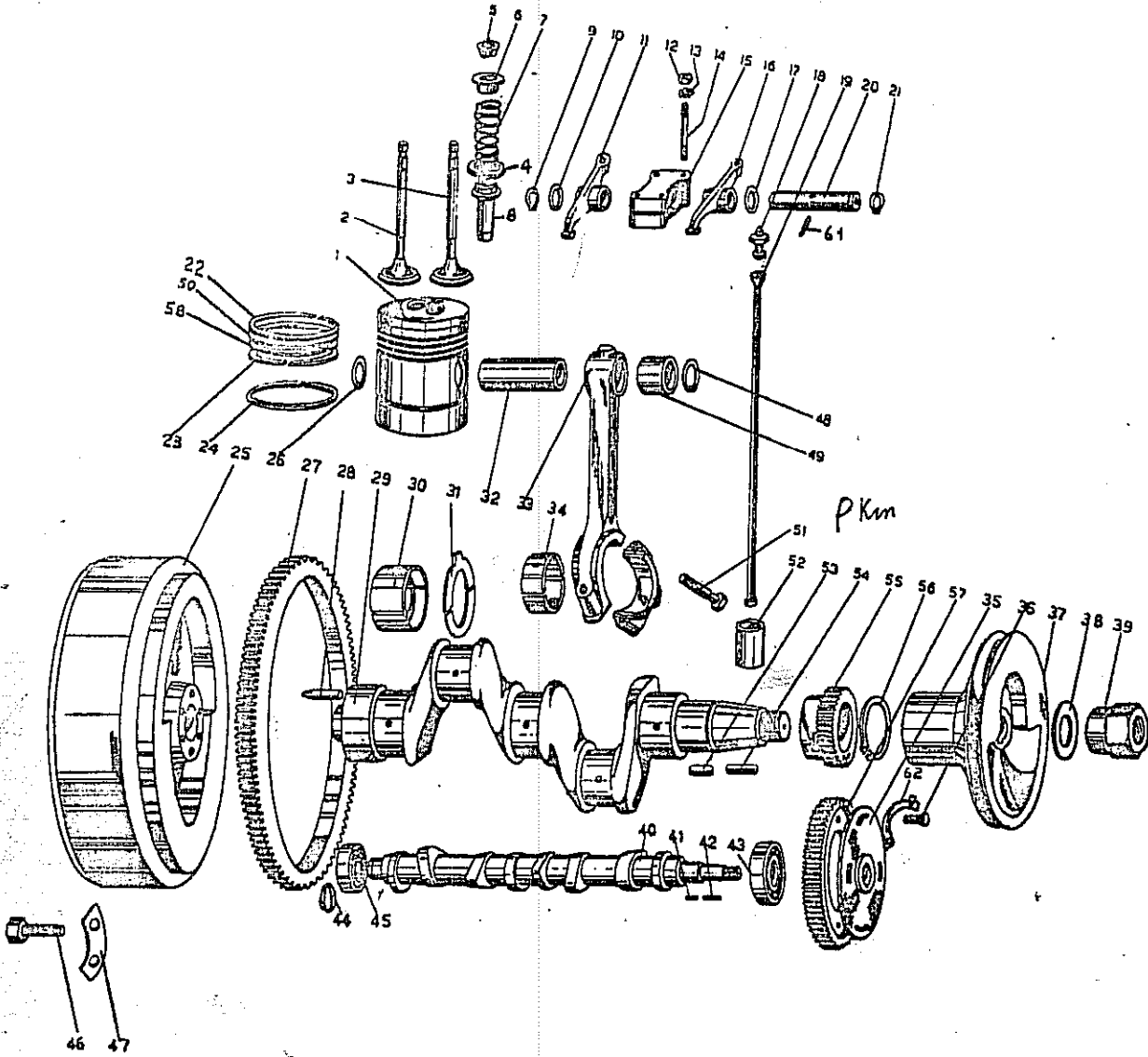


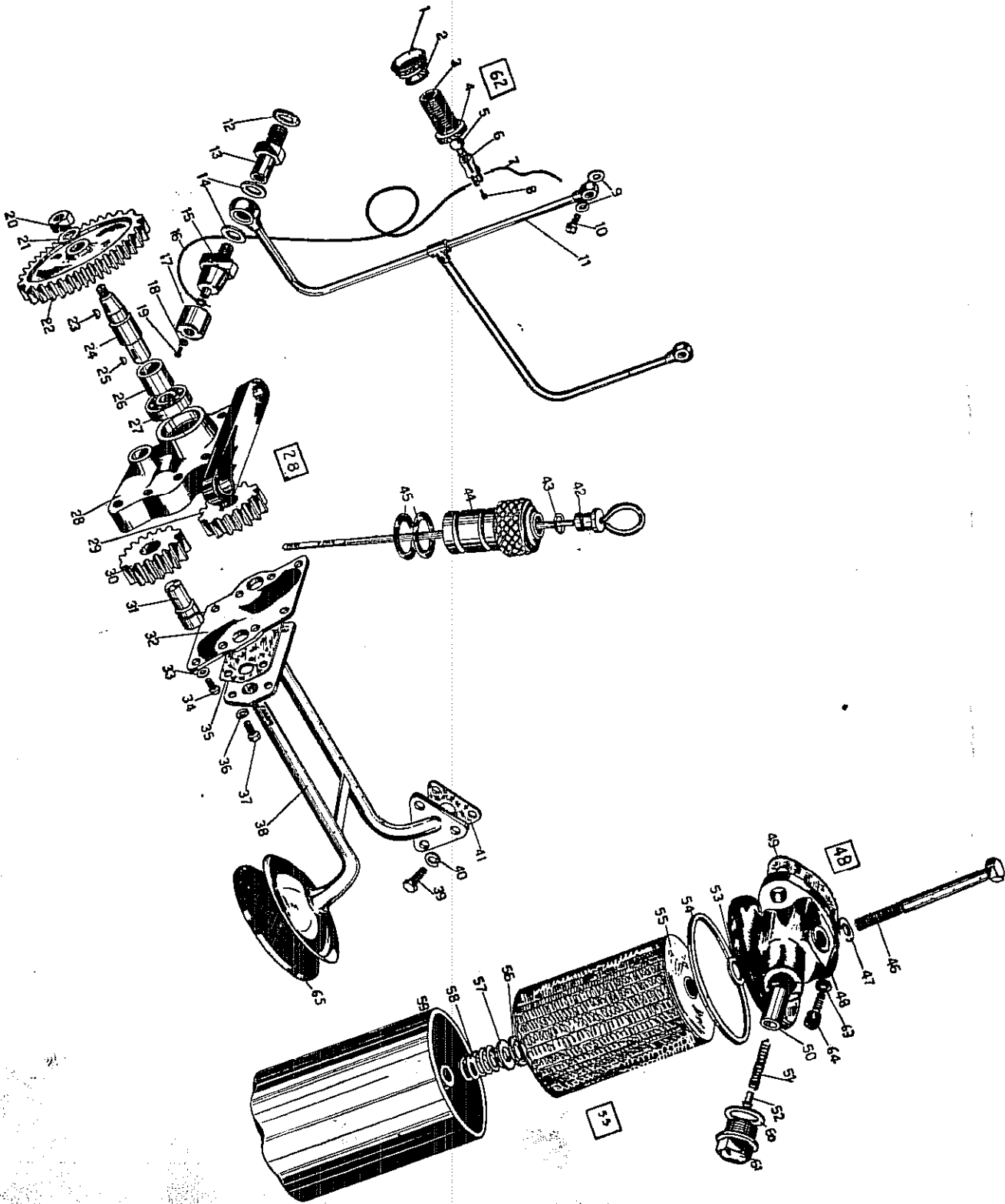
CILINDRO E TESTATA

TAV. 2

kp 11



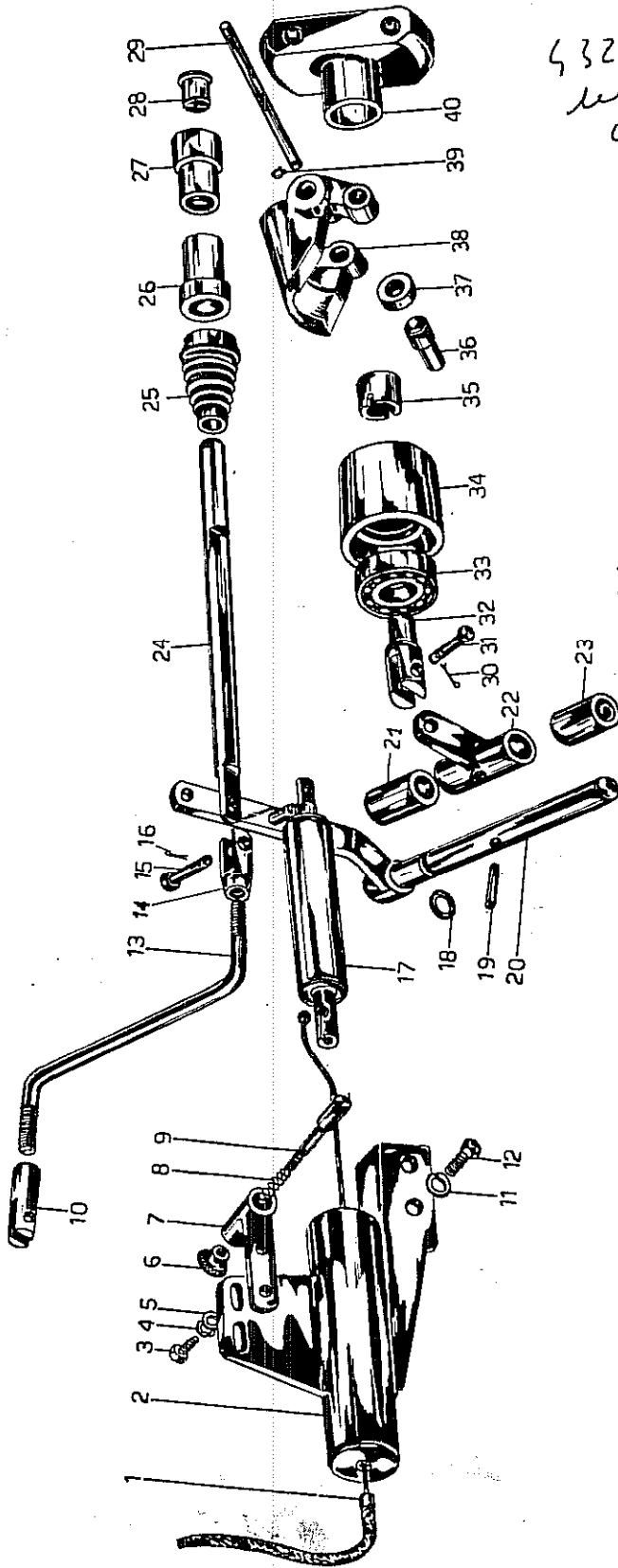






REGOLATORE CENTRIFUGO

TAV. 5

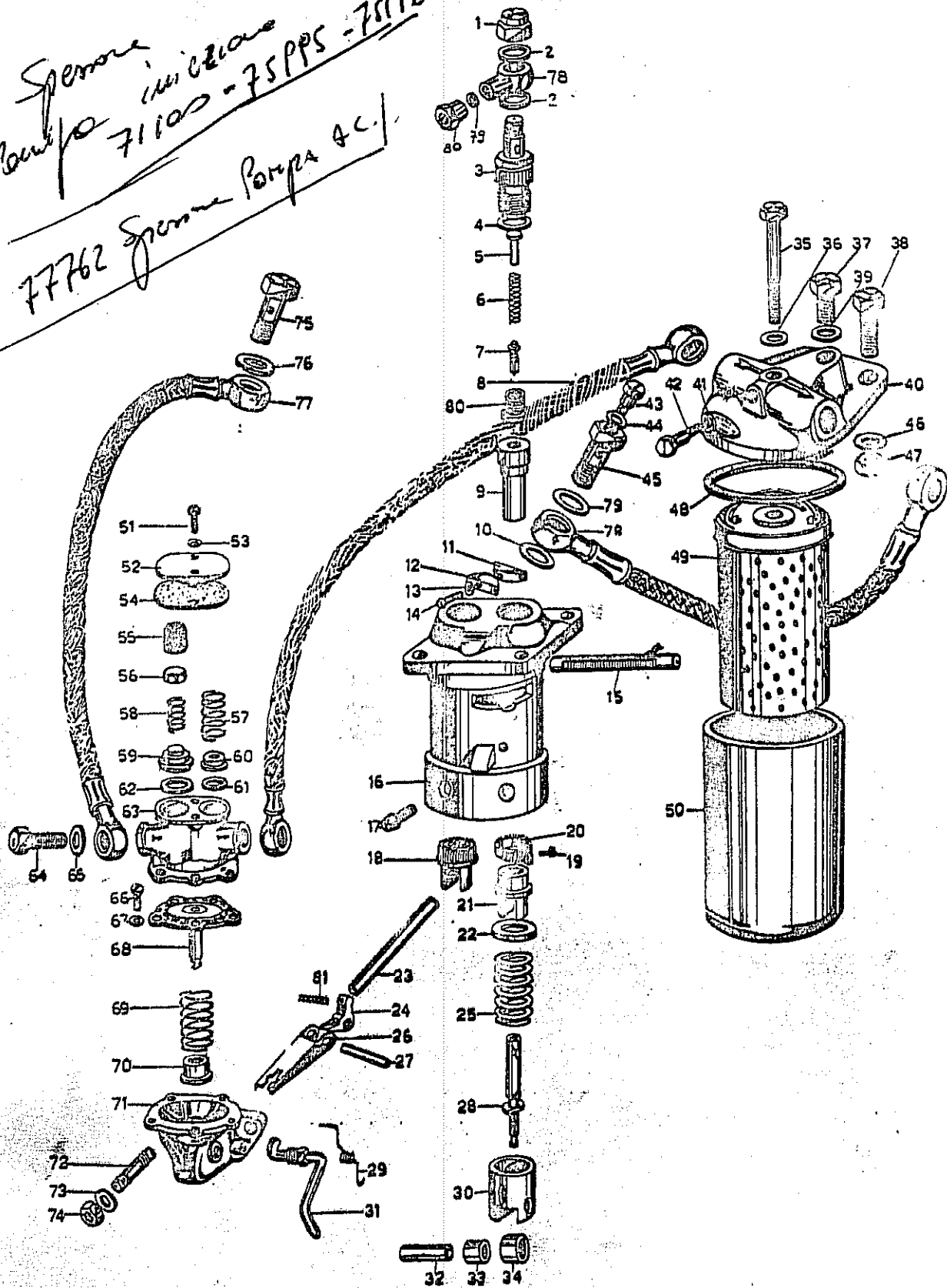


43268
Lente
cassa

70038 flange
sul regolatore



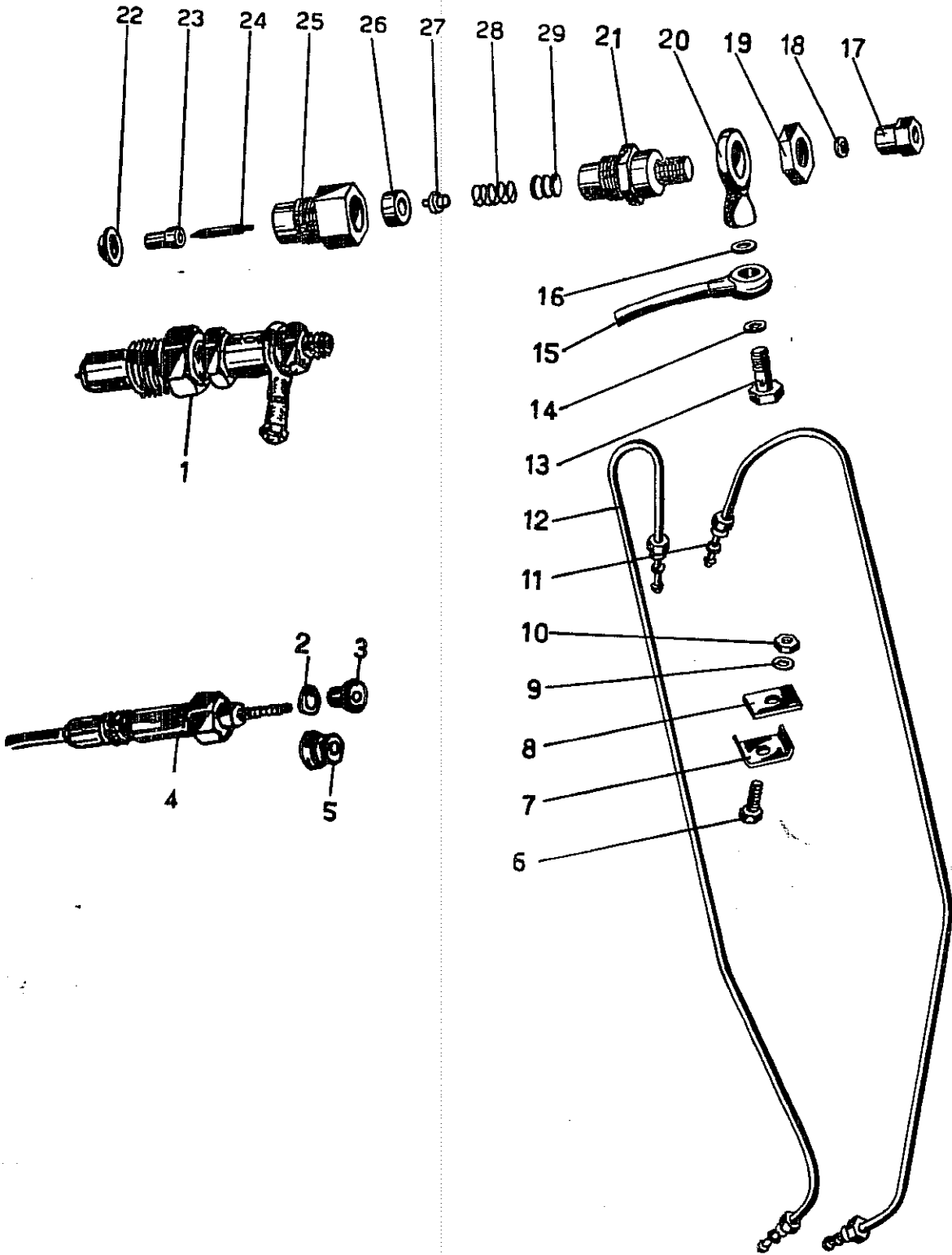
*Sperone
Pompa iniziale
71100 - 75PPS - 75PP6
77762 Sperone Pompa A.C.*





INIETTORE E CANDELETTA

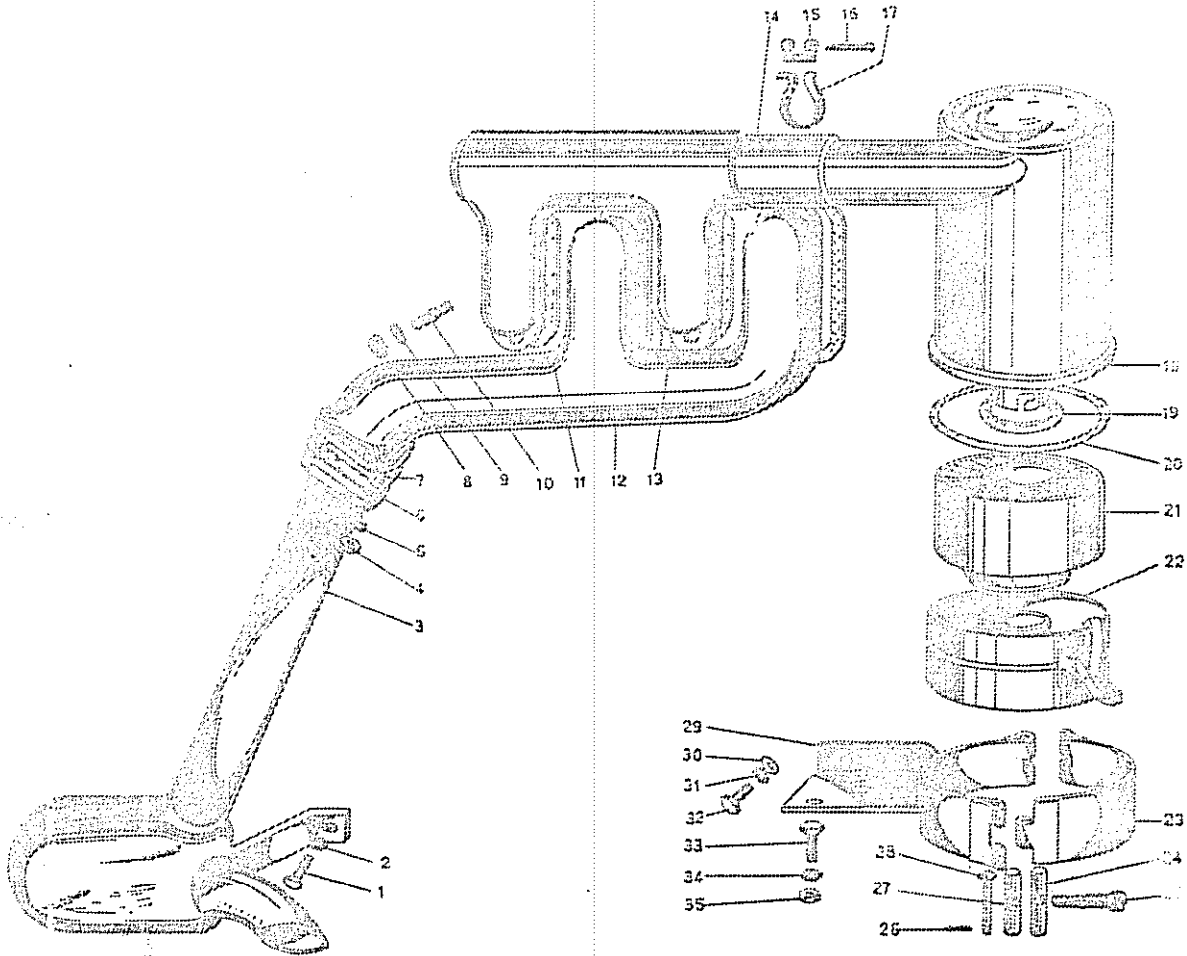
TAV. 7

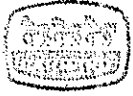




FILTRO ARIA E COLLETTORI

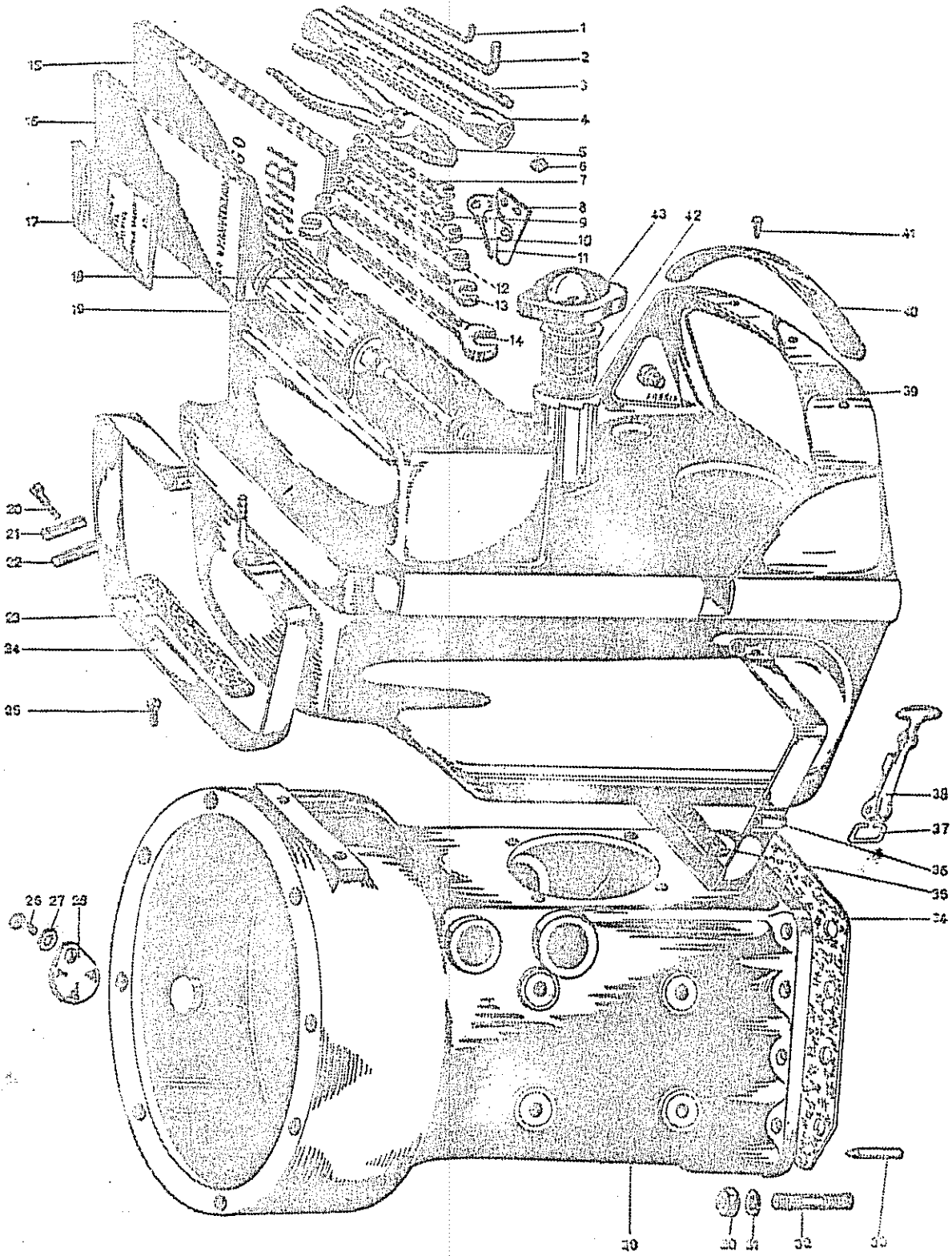
TRV. 9





CORPO TRATTORE E SERBATOIO

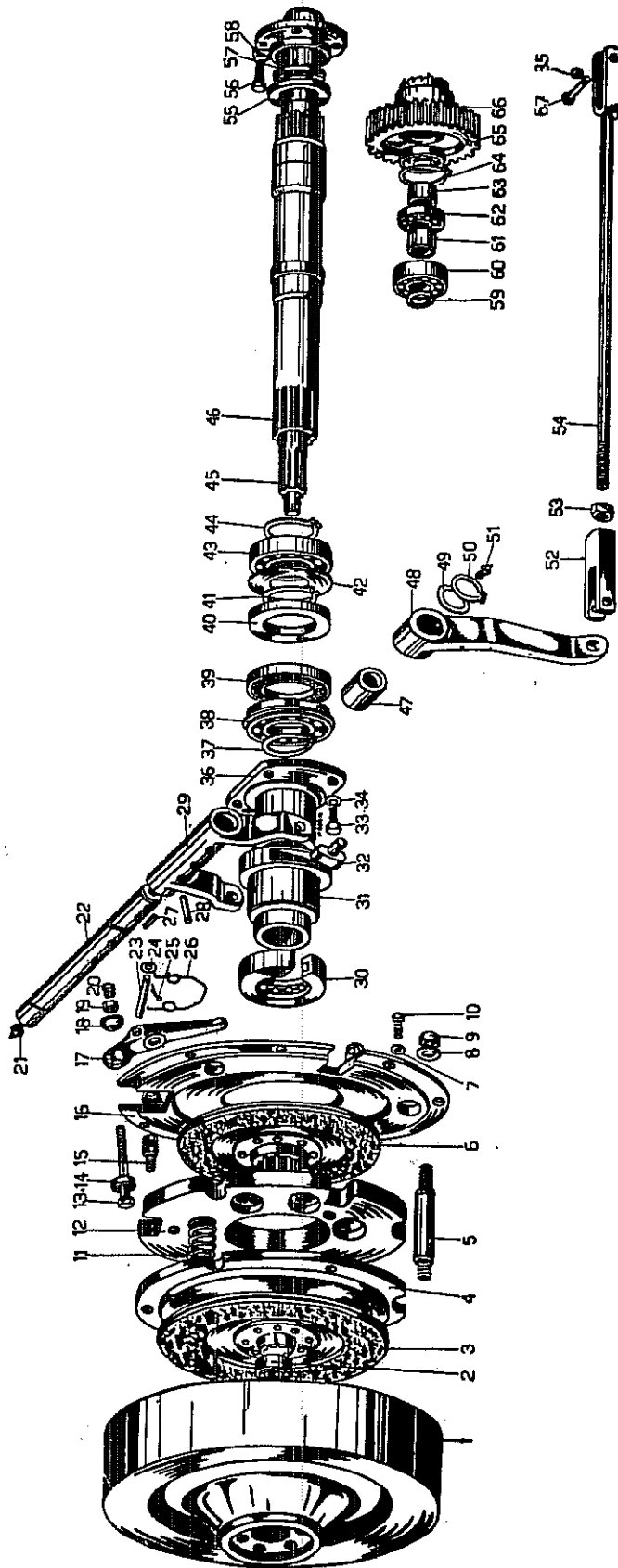
TAV. 10

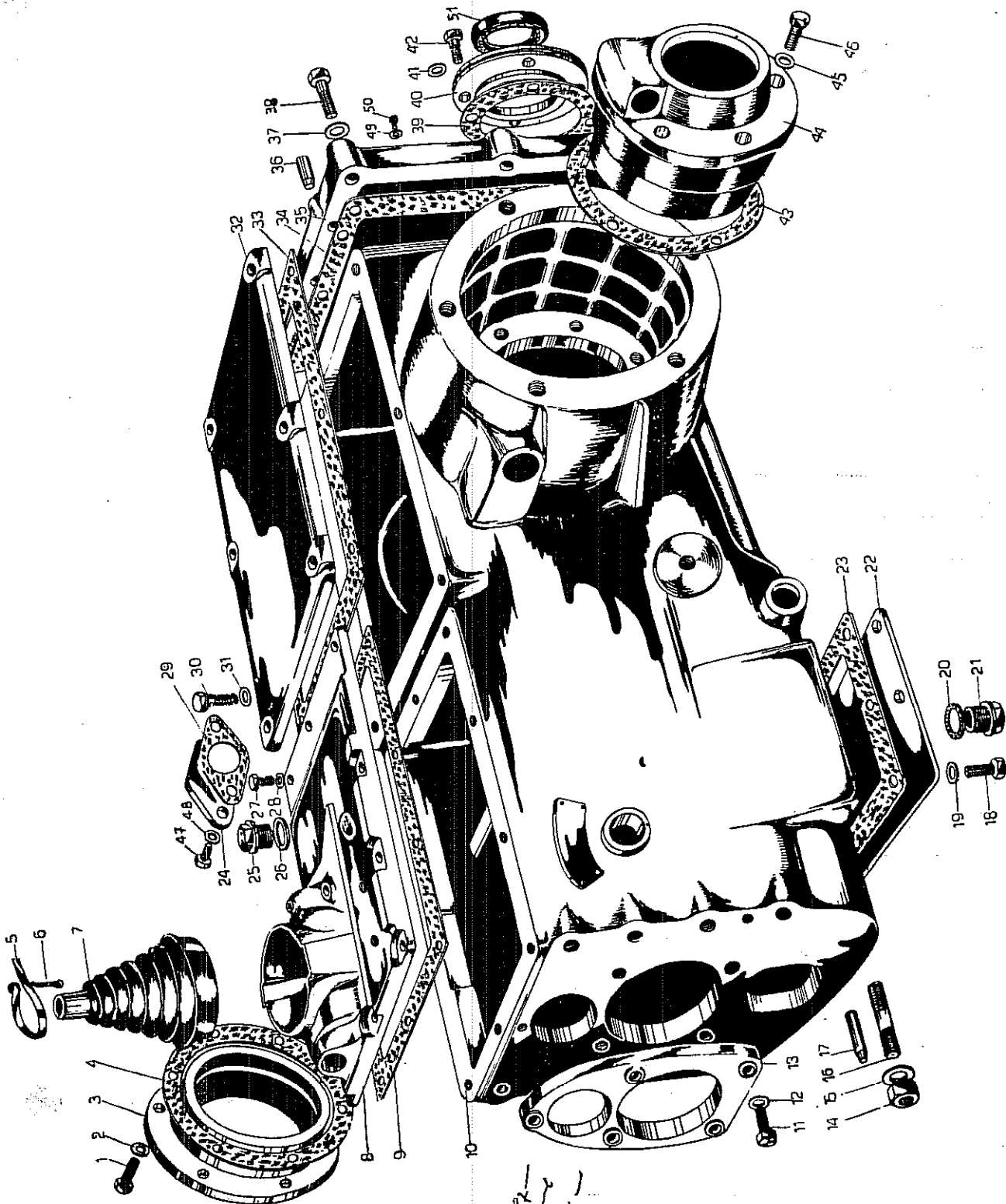




DOPPIA FRIZIONE

TAV. 11



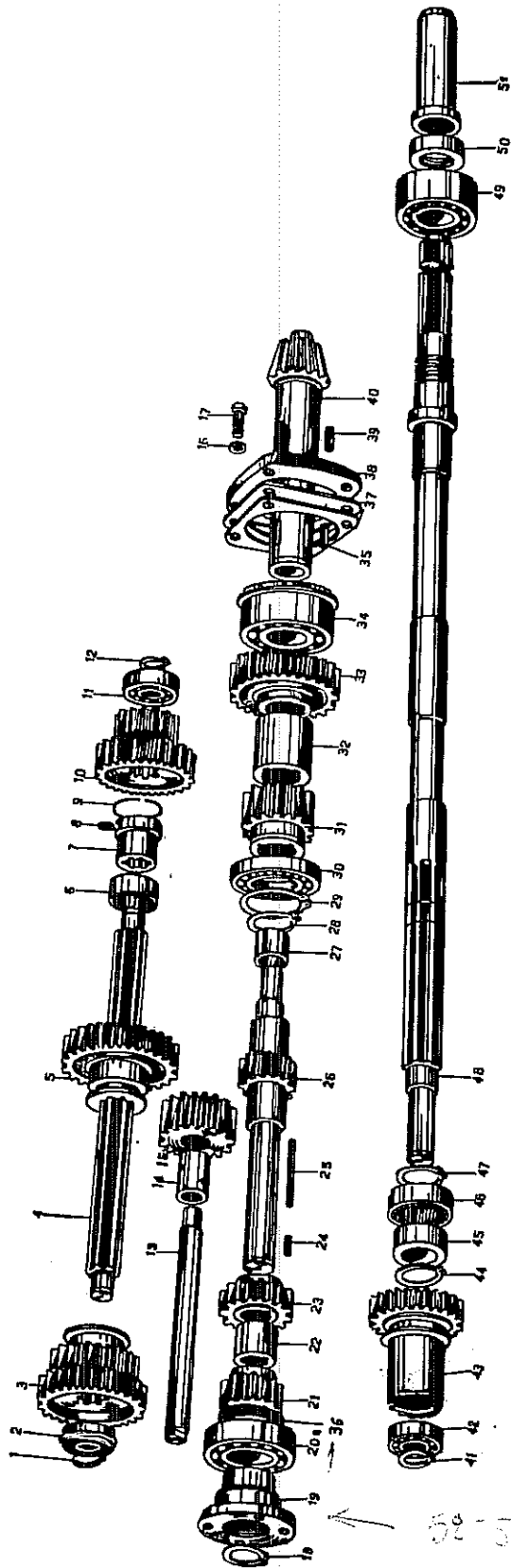


75572
P
75573



INGRANAGGI CAMBIO VELOCITÀ

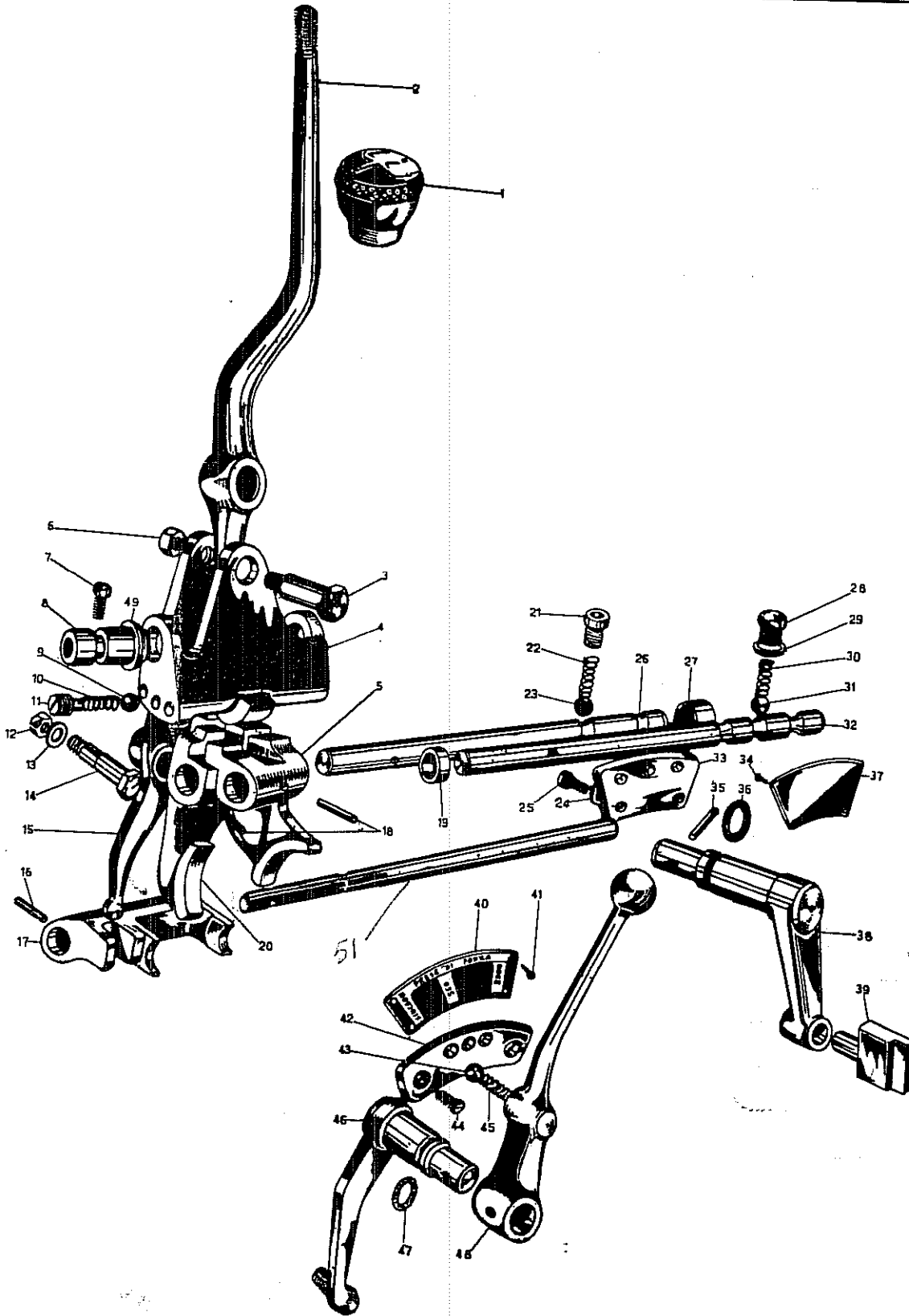
TAV. 13





COMANDI CAMBIO VELOCITÀ

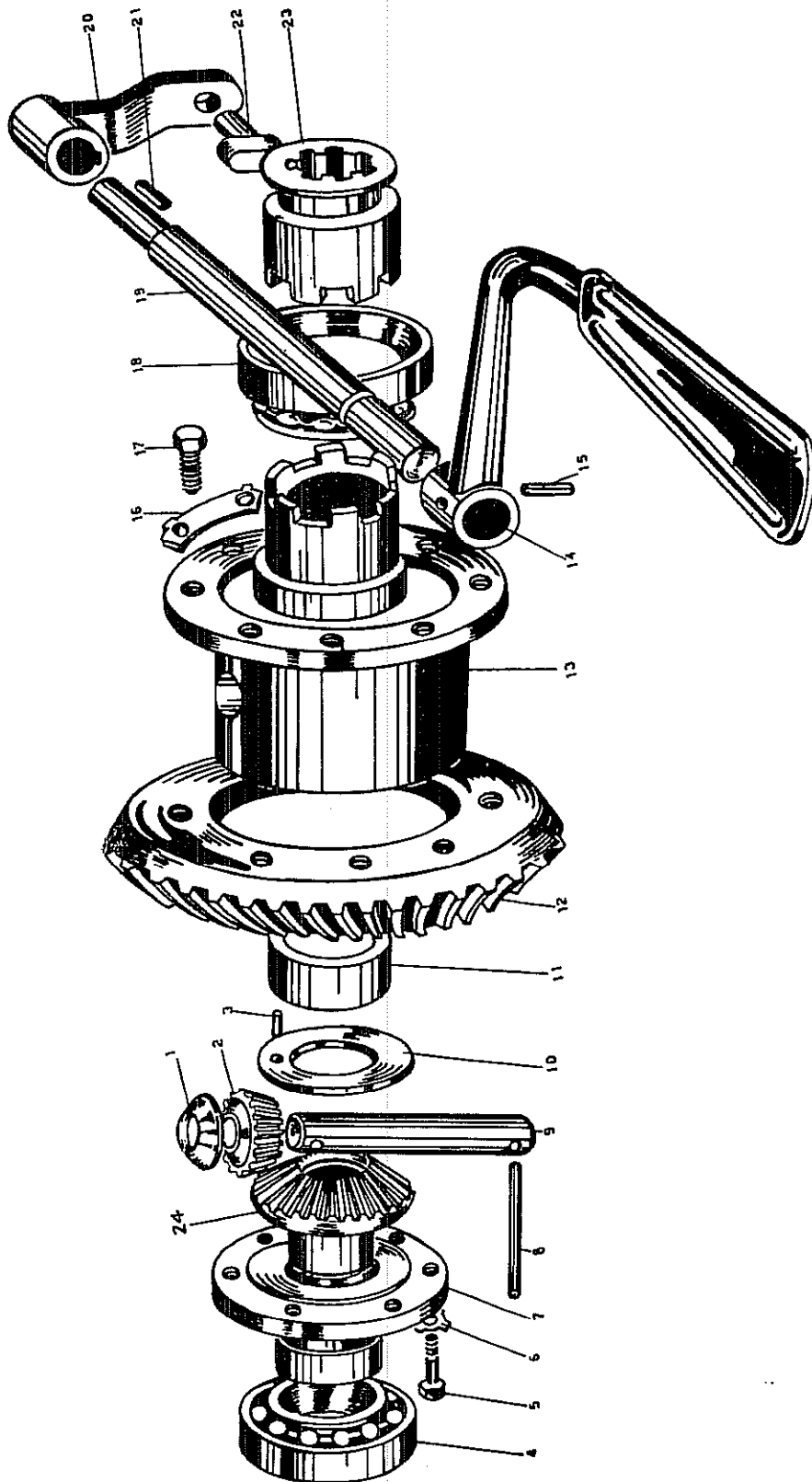
TAV. 14

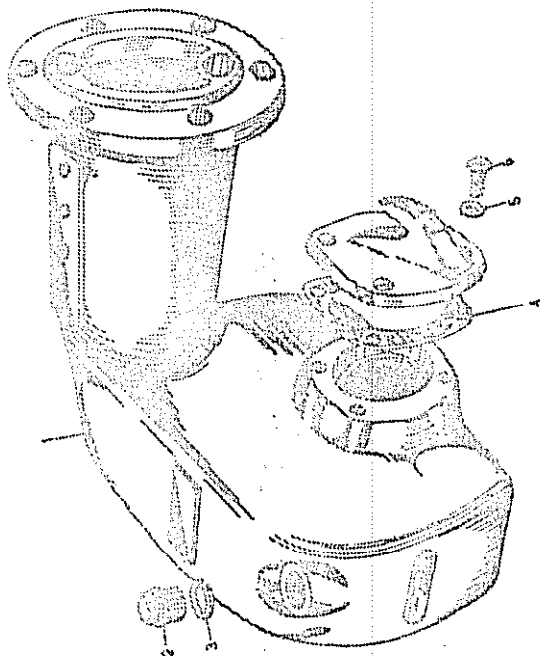
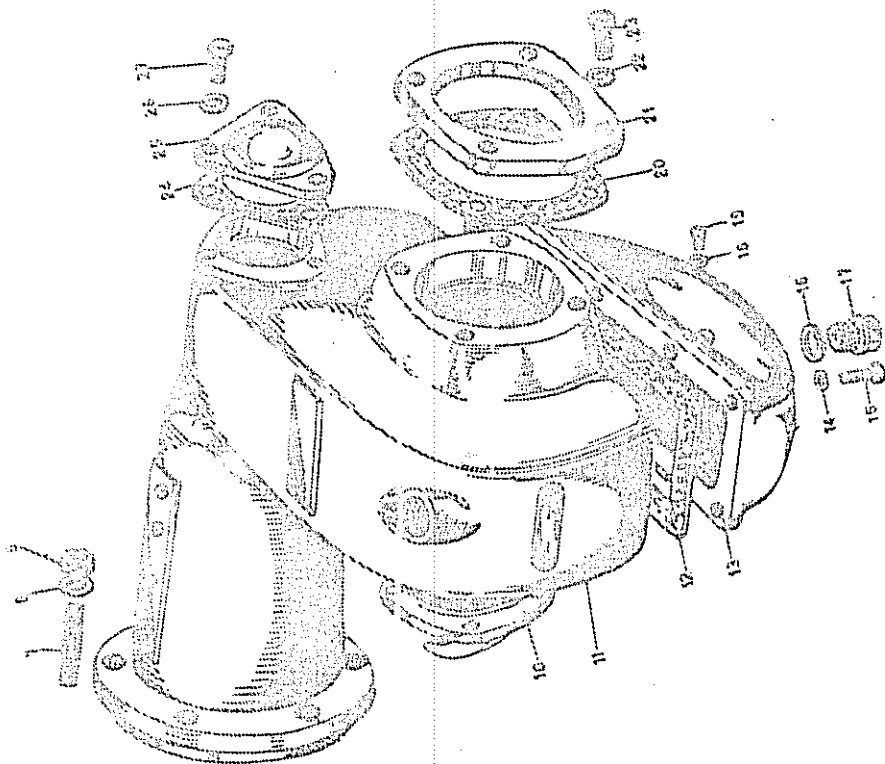
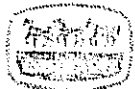


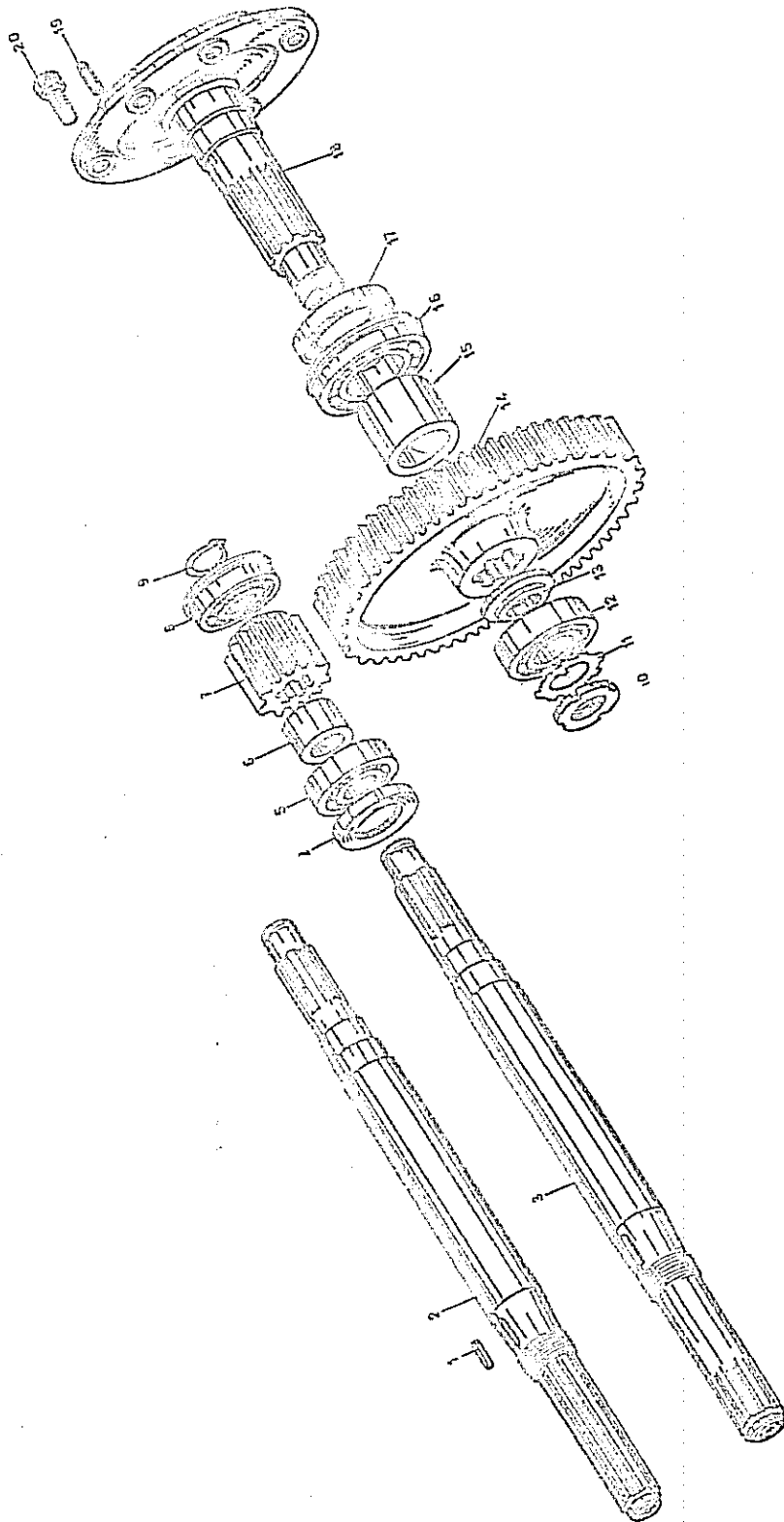


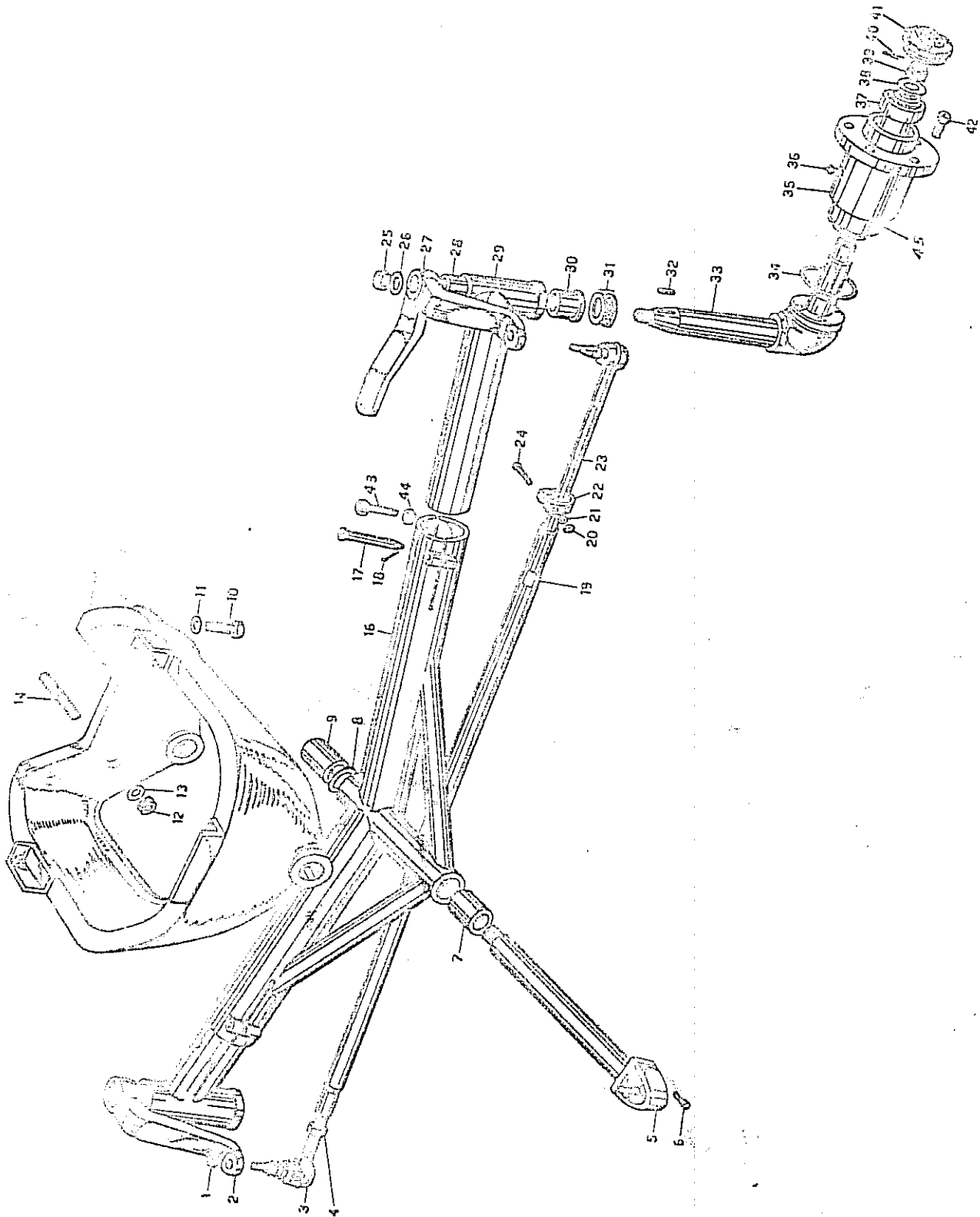
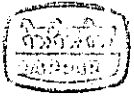
DIFFERENZIALE E BLOCCAGGIO

TAV. 15







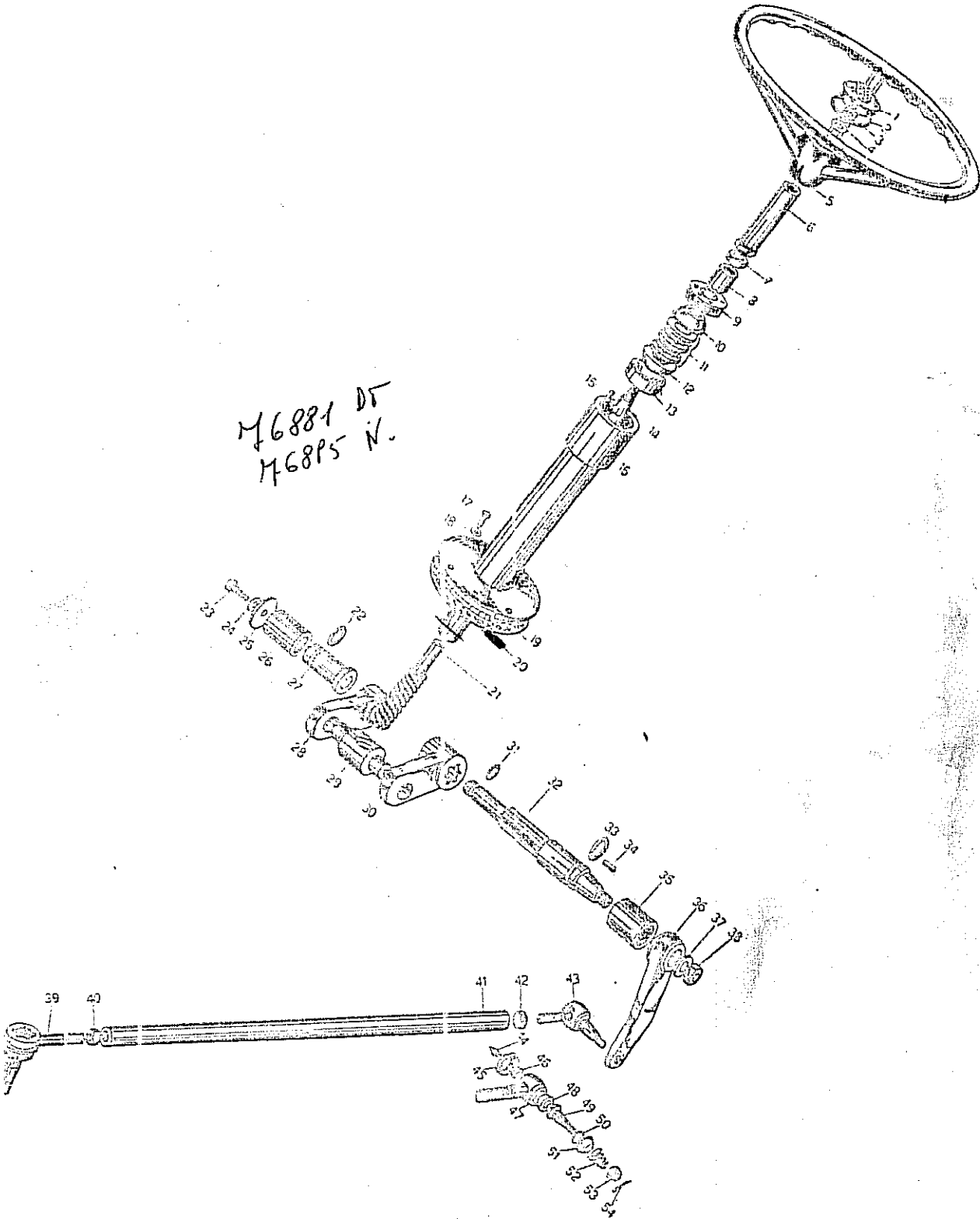




STERZO

TAV. 19

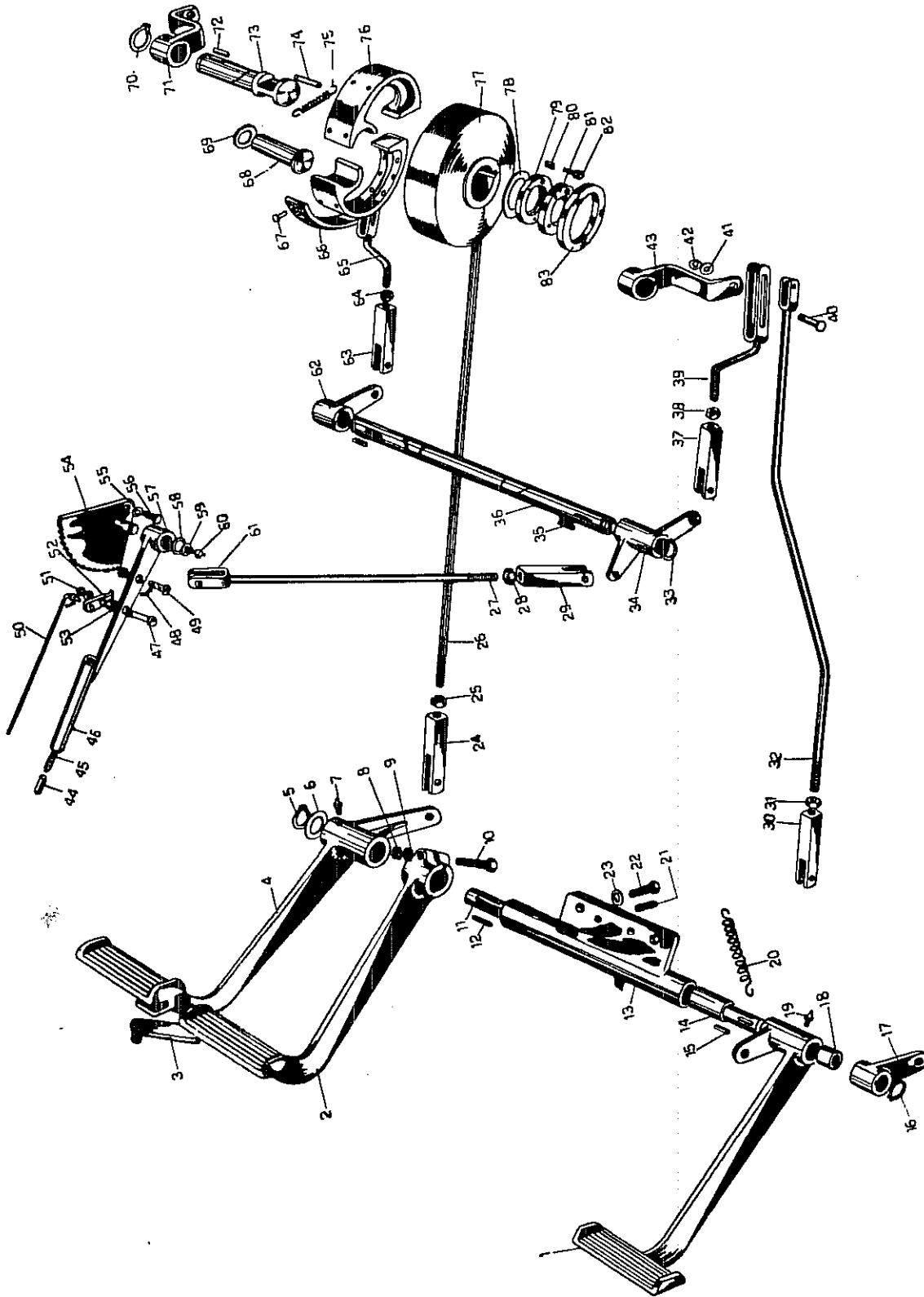
M6881 DT
M6885 N.





FRENI E PEDALI

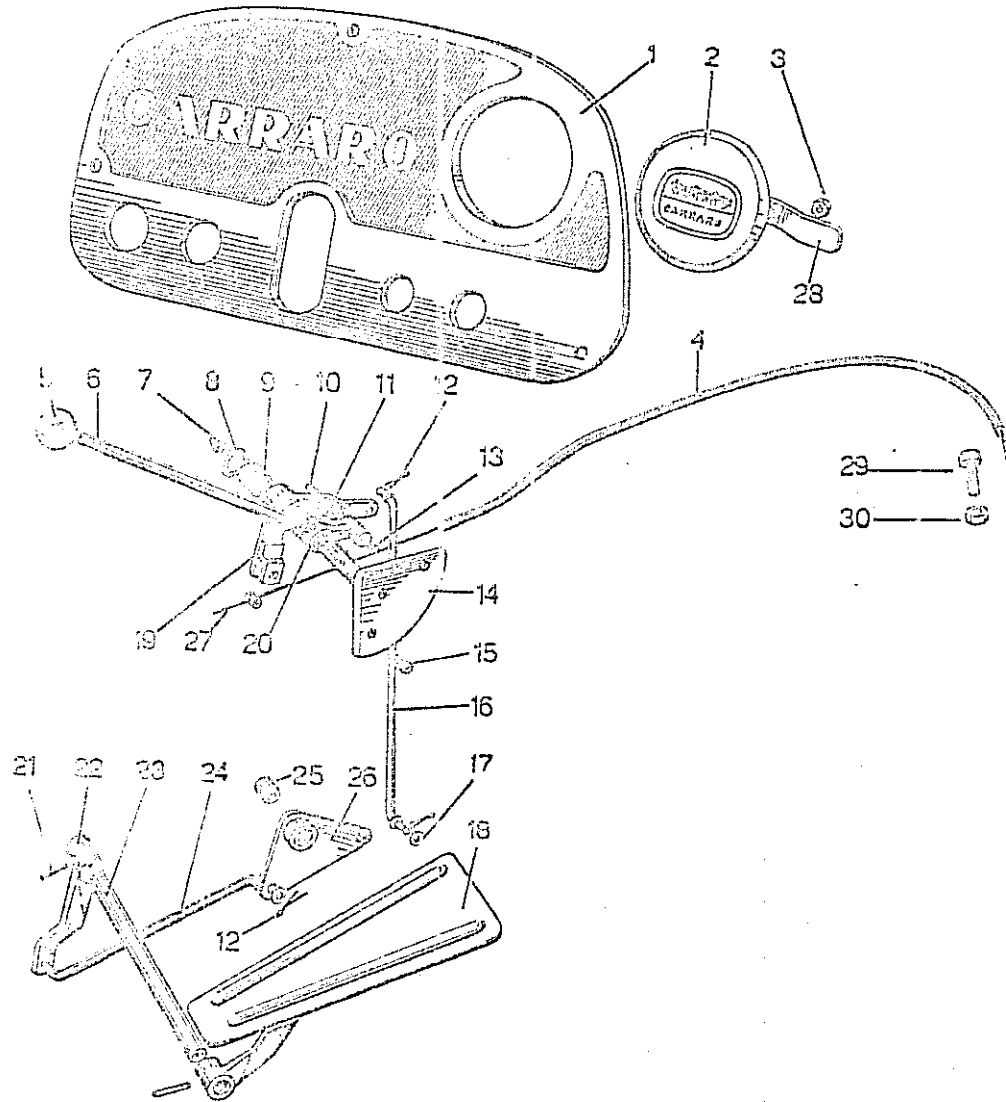
TAV. 20

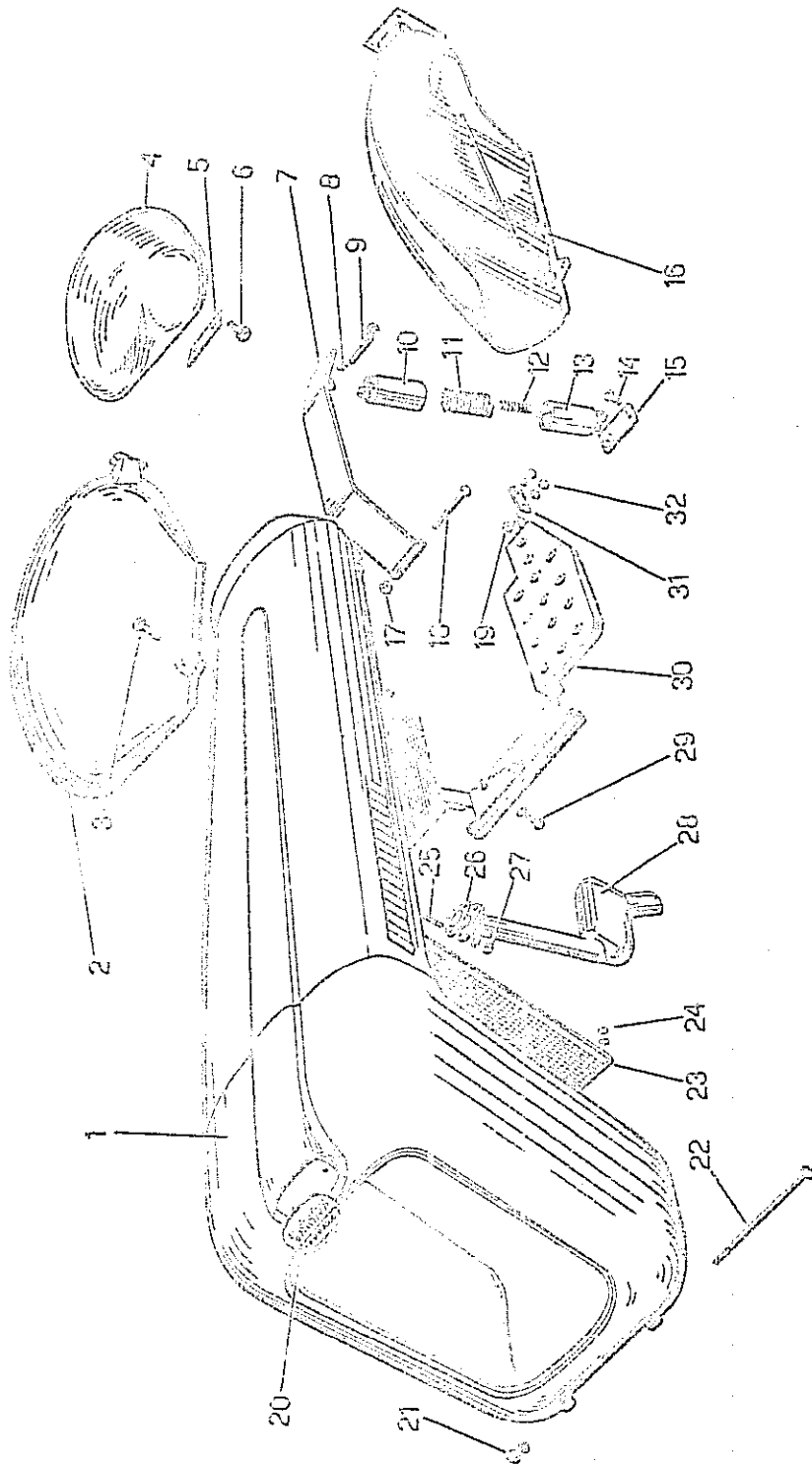
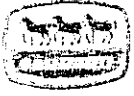


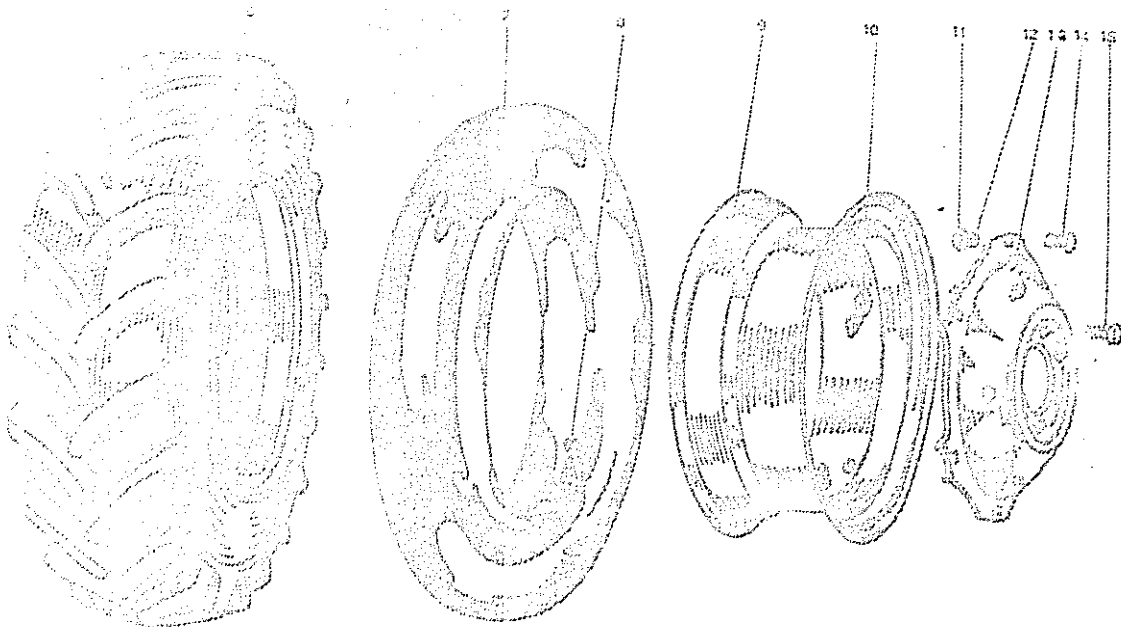
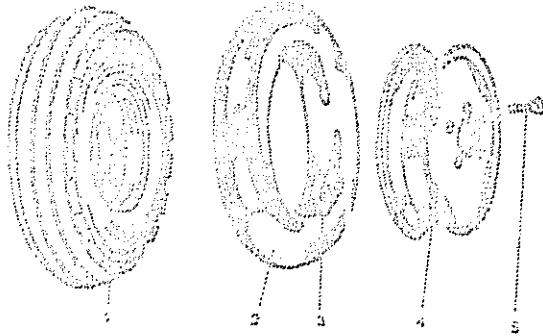


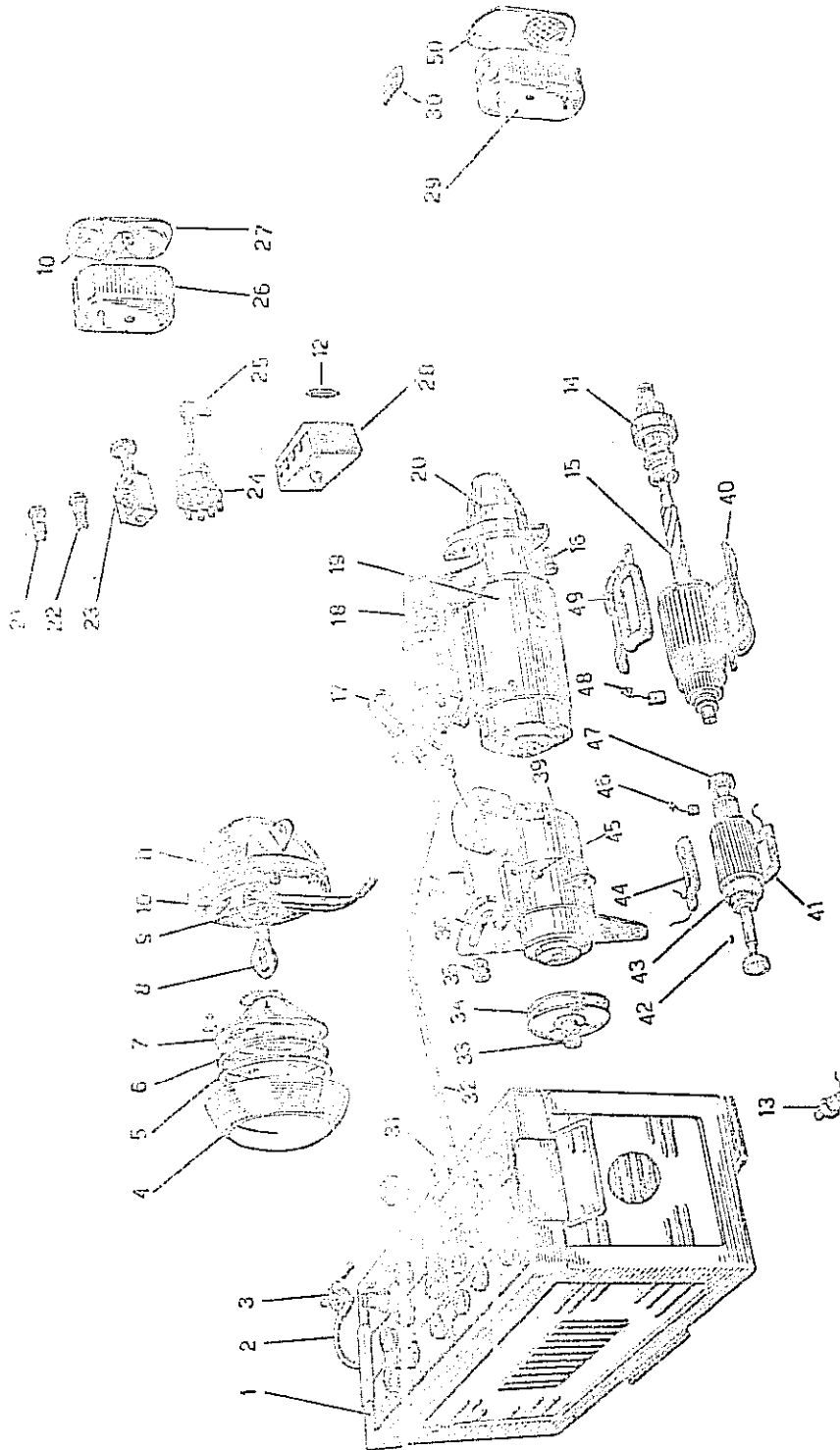
CRUSCOTTO E ACCELERATORE

Tcv. 21





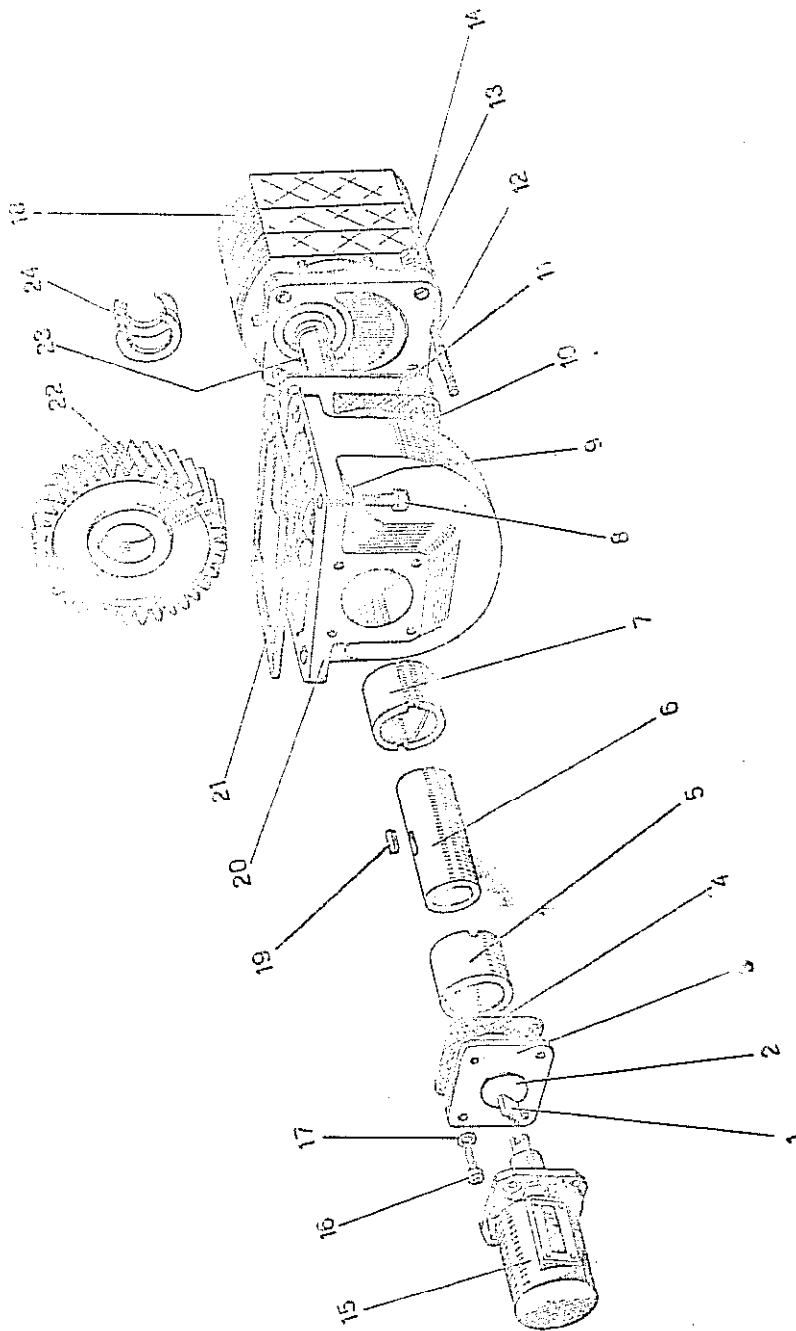






POMPA SOLLEVAMENTO IDRAULICO

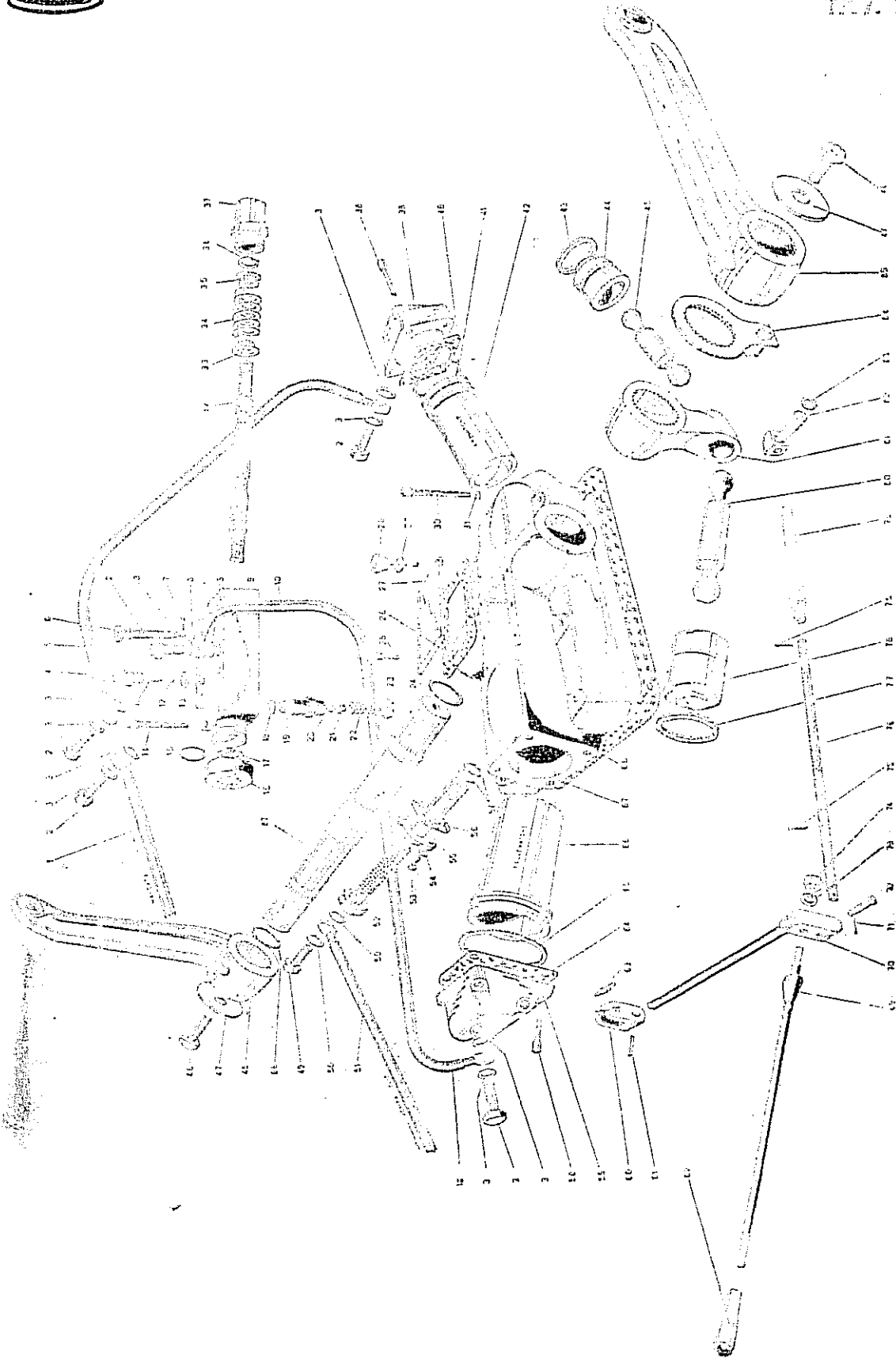
1017. 23





SOLEVAMENTO A DOPPIO EFFETTO

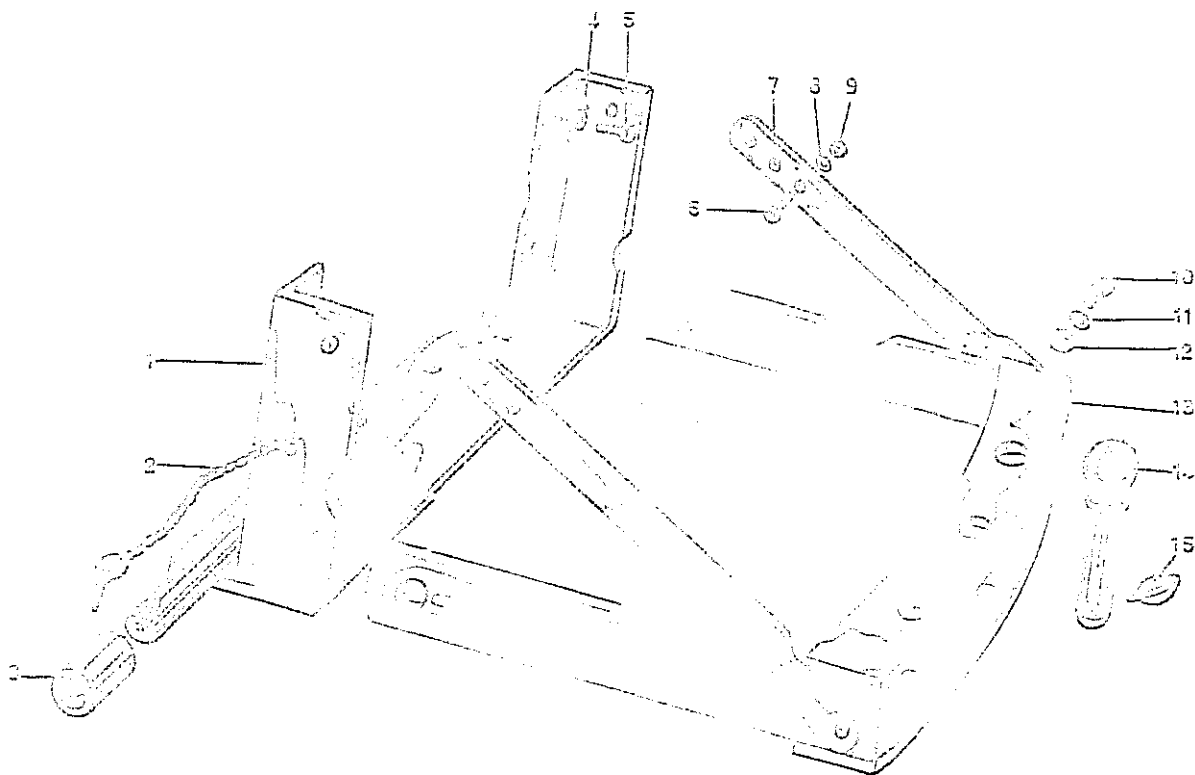
117. 21

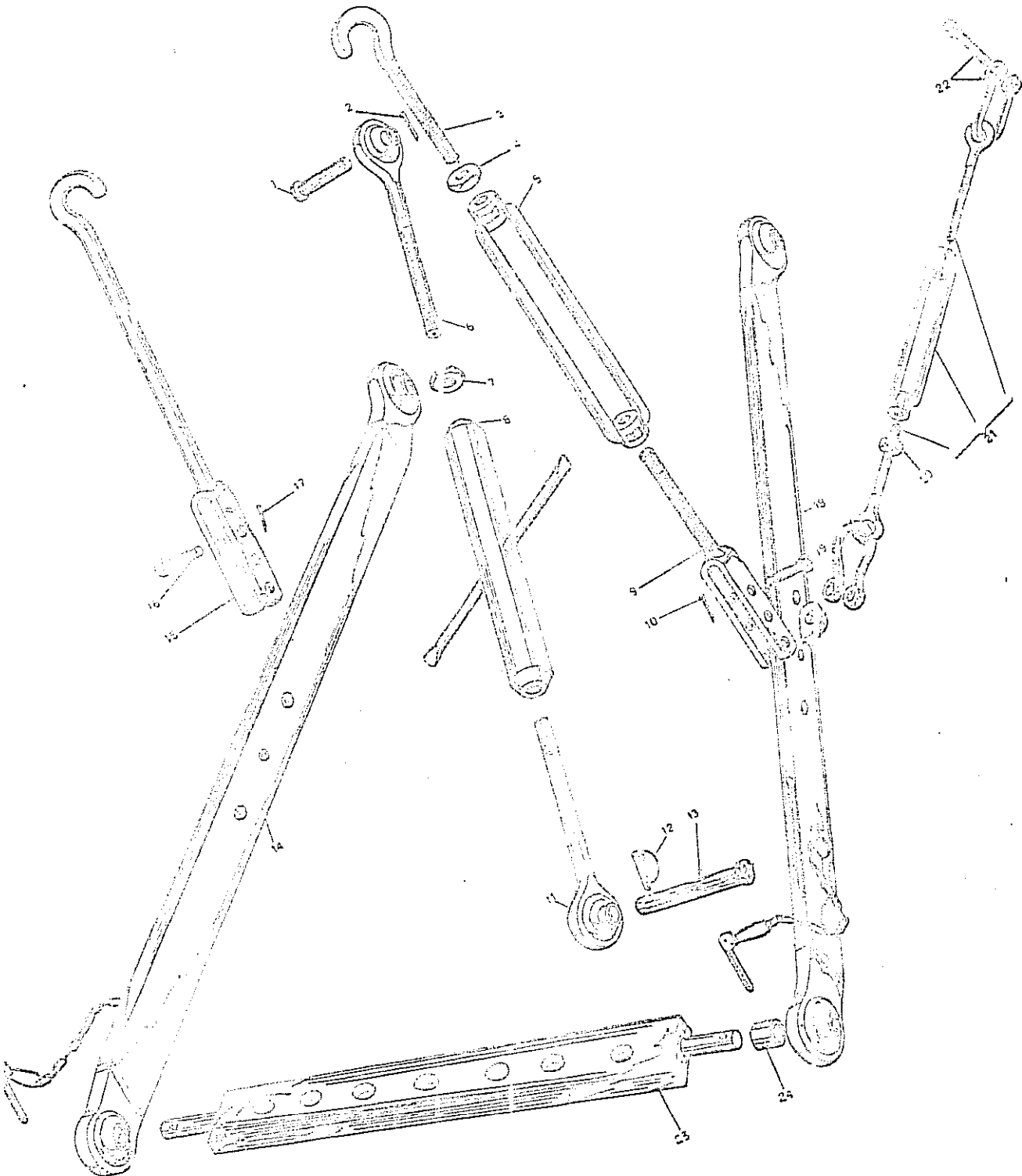




BARRA DI TRAINO APPROVATA

FIG. 27

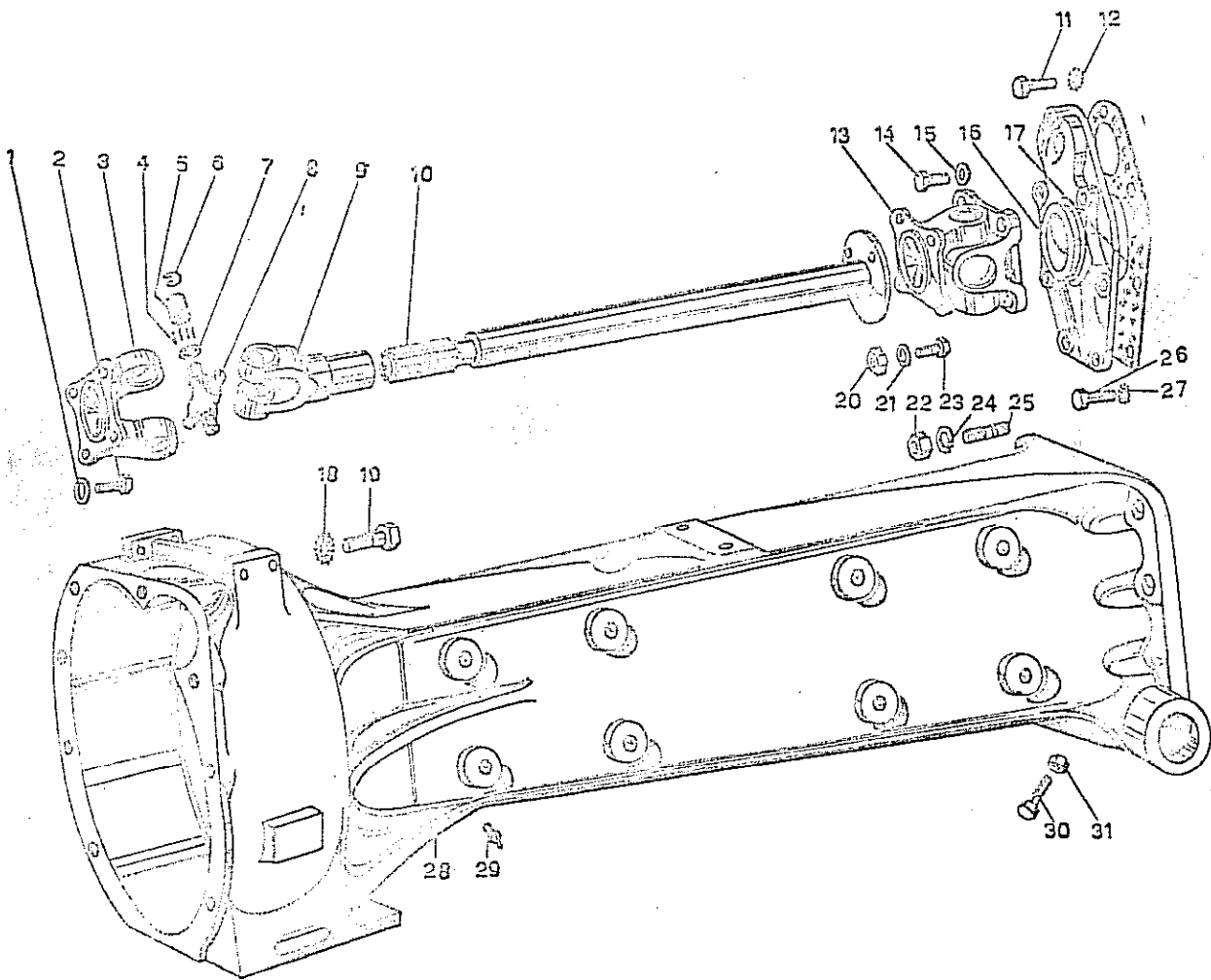






CORPO TRATTORE E TRASMISSIONE

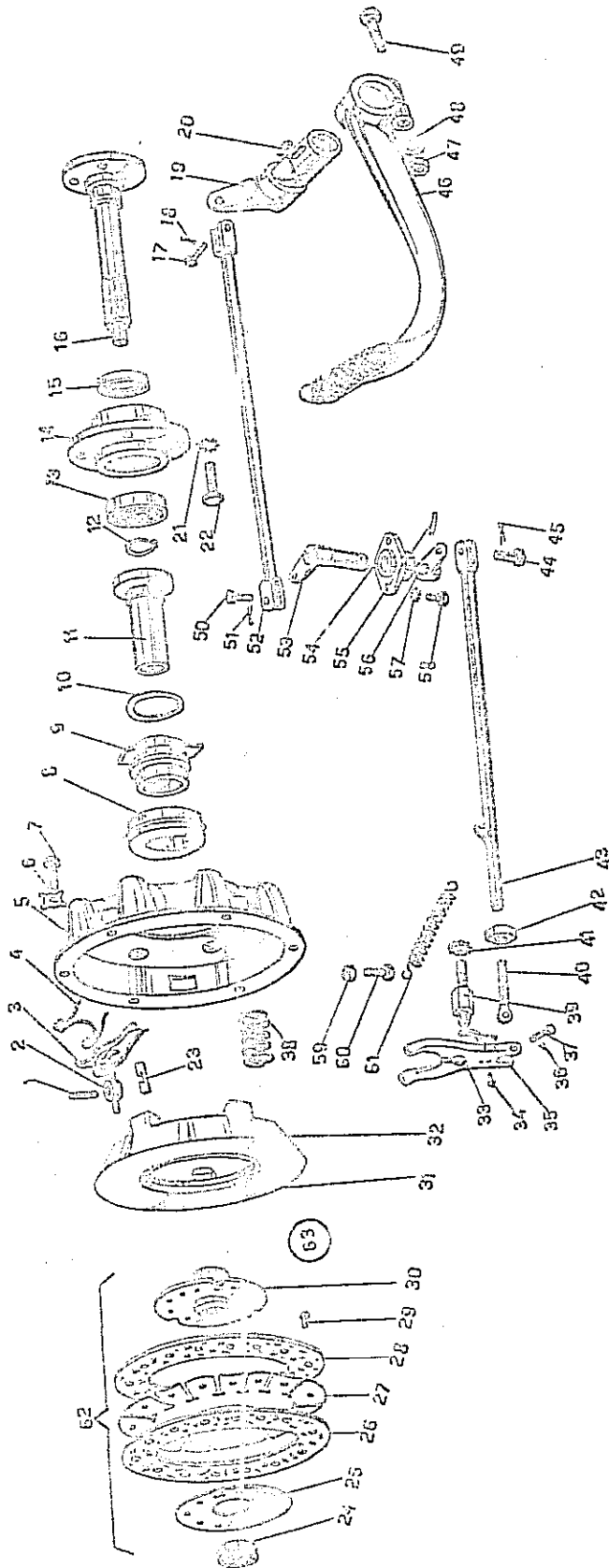
TAV. 29

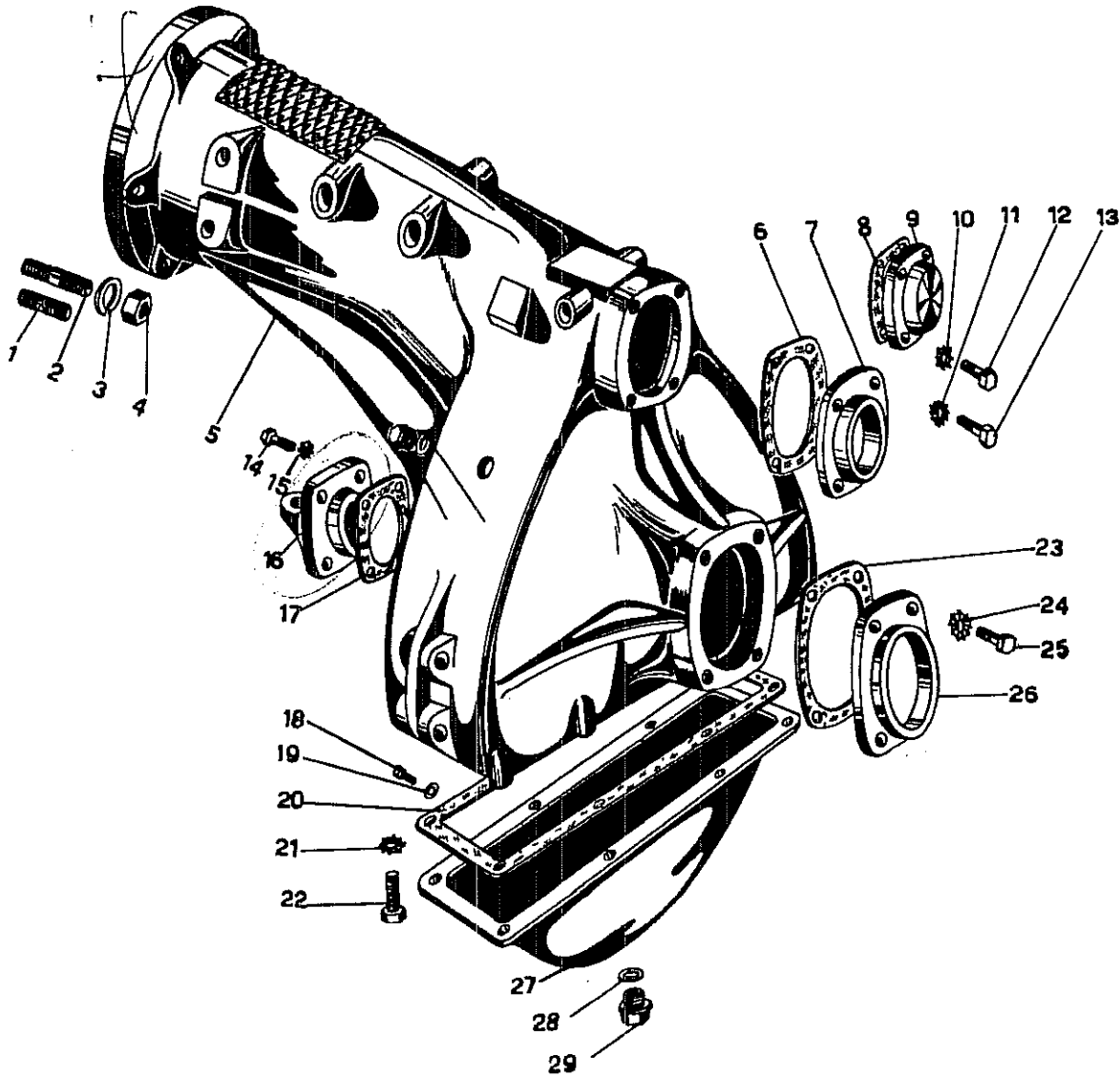


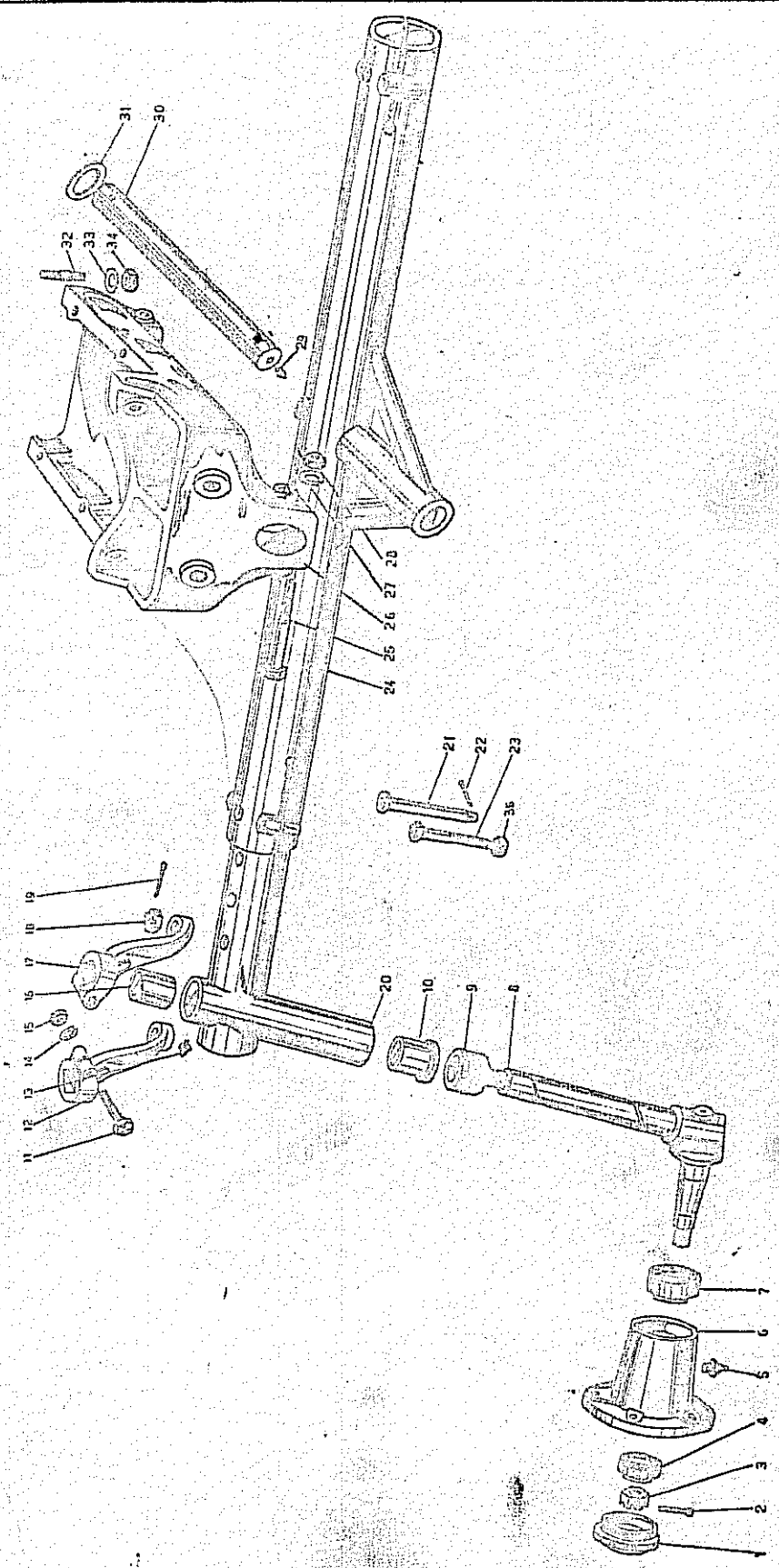


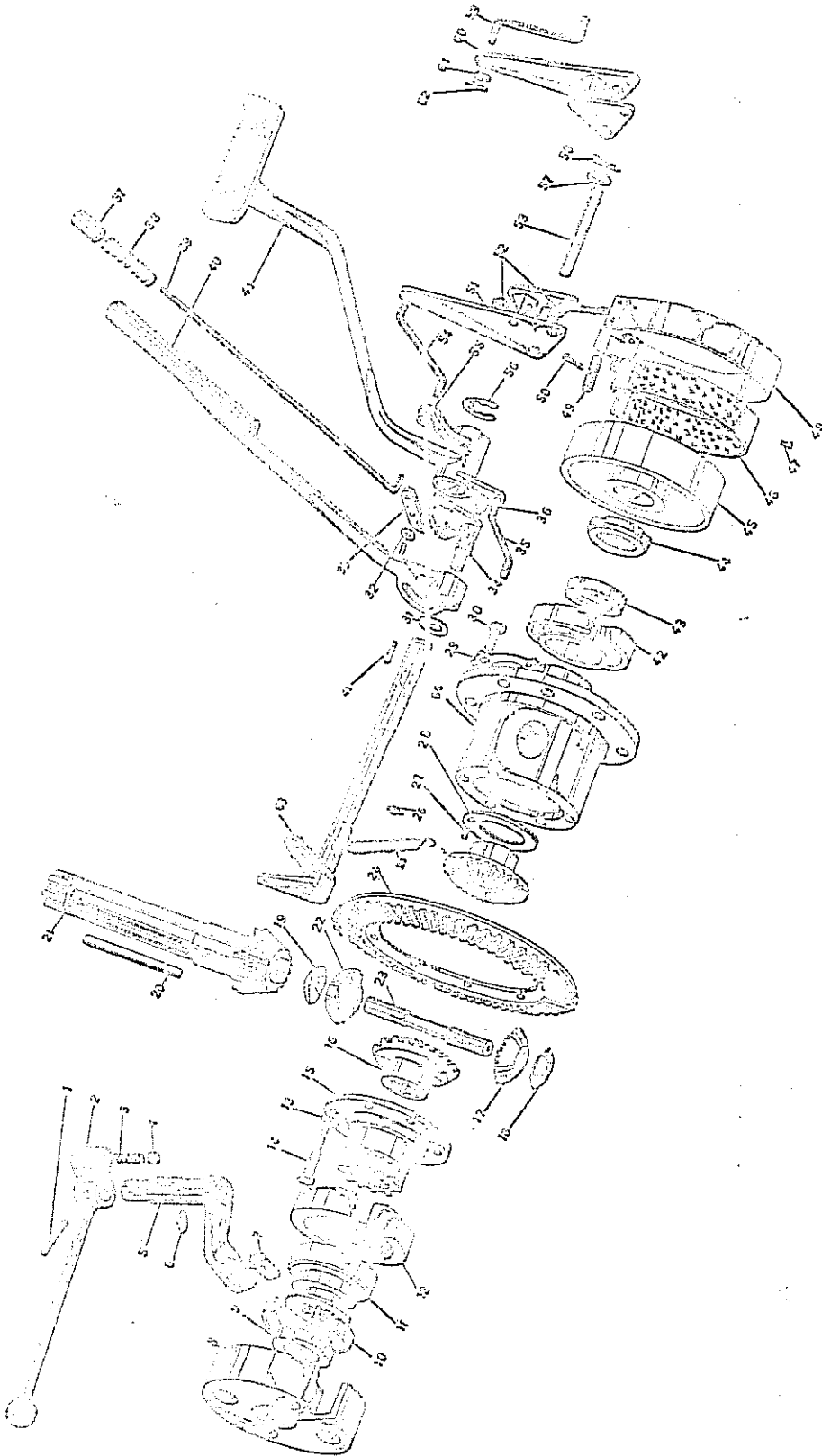
FRIZIONE NORMALE

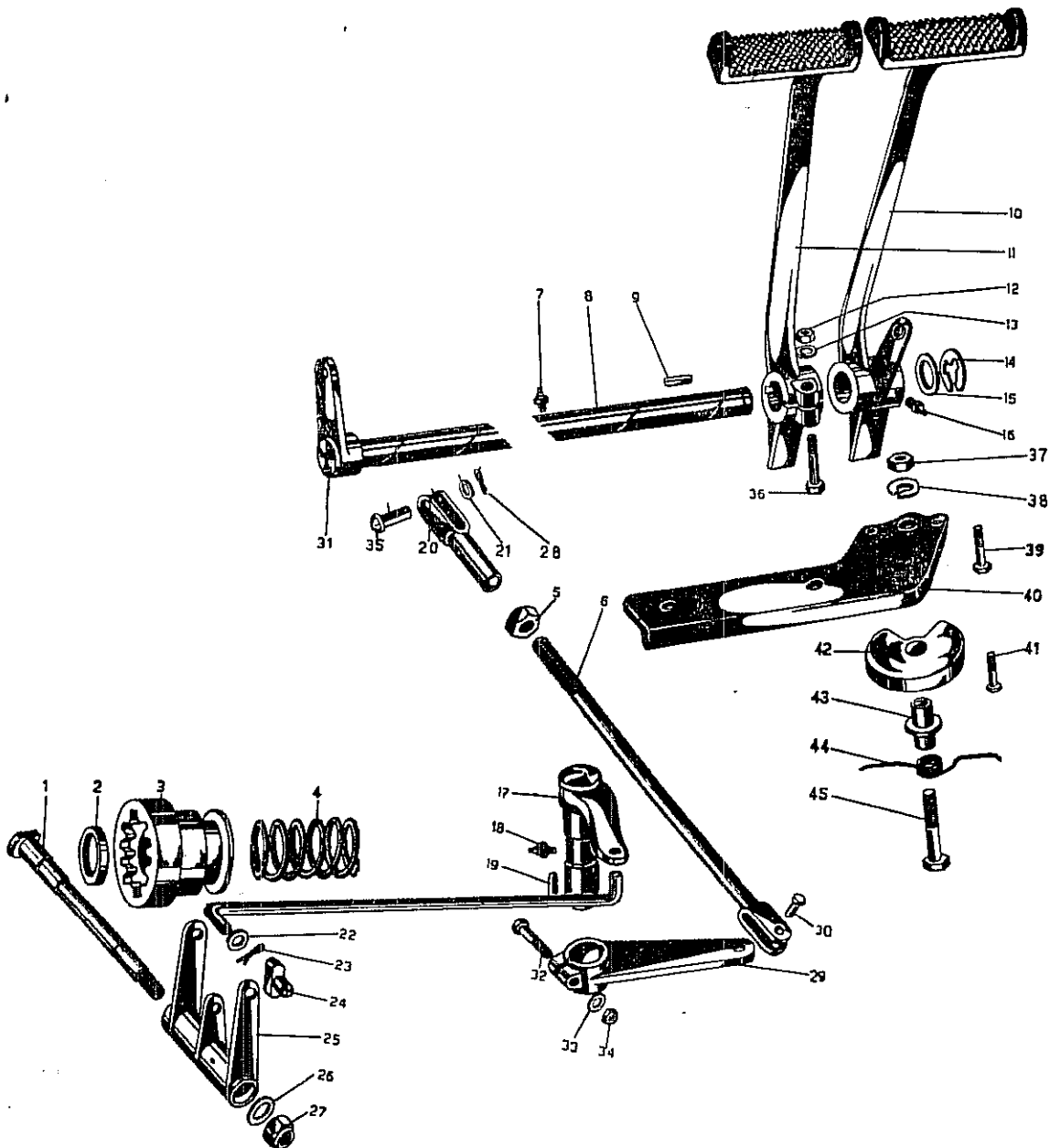
TAV. 33

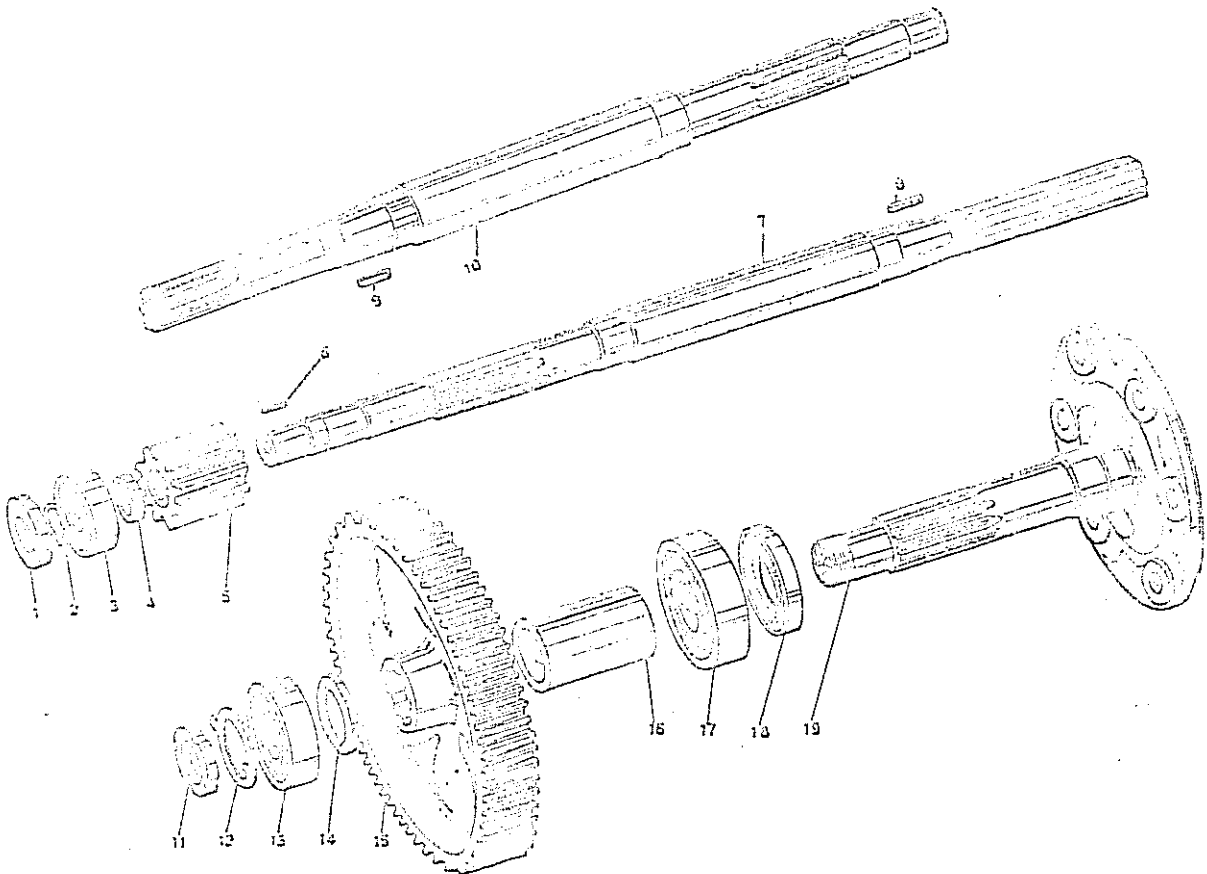








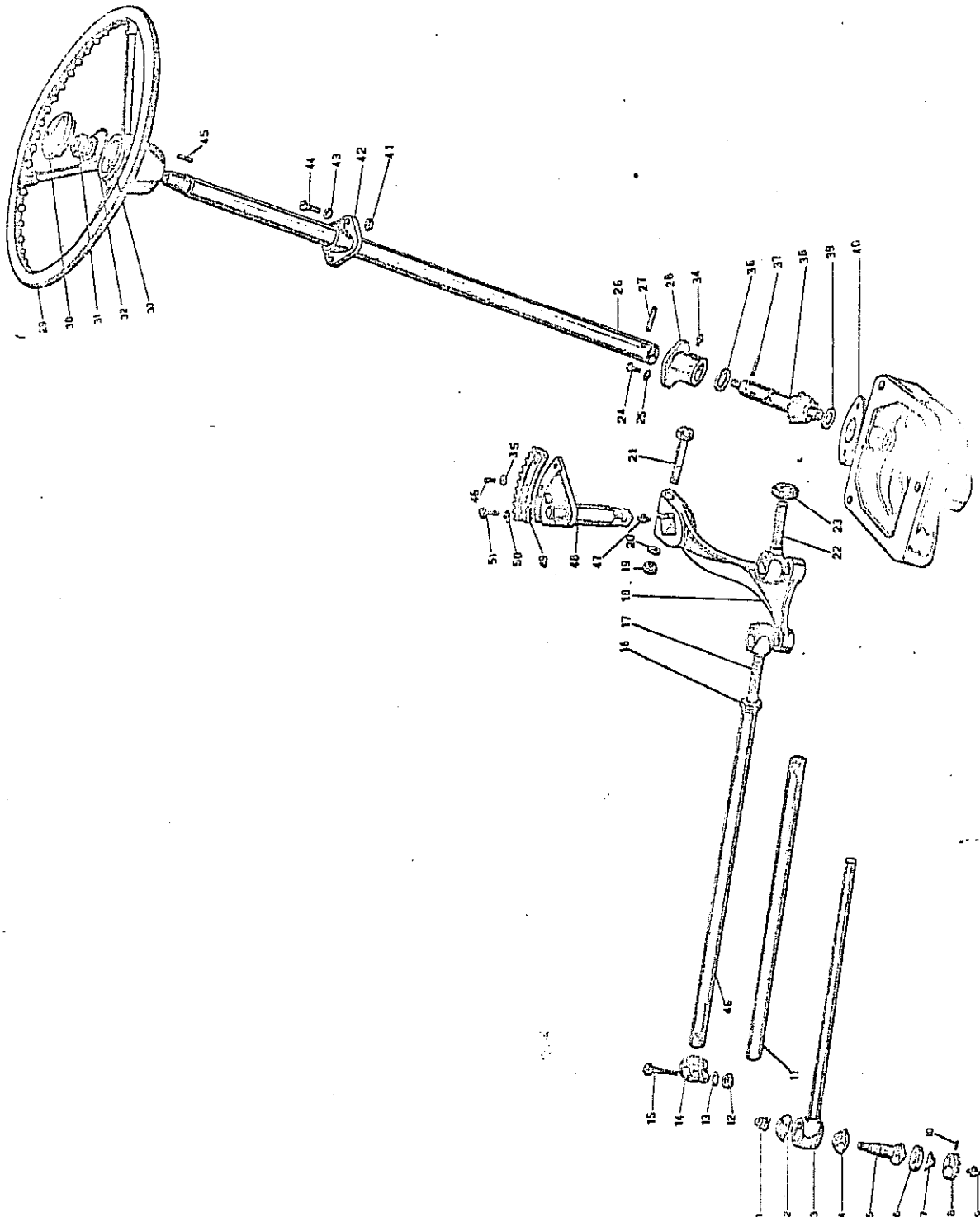


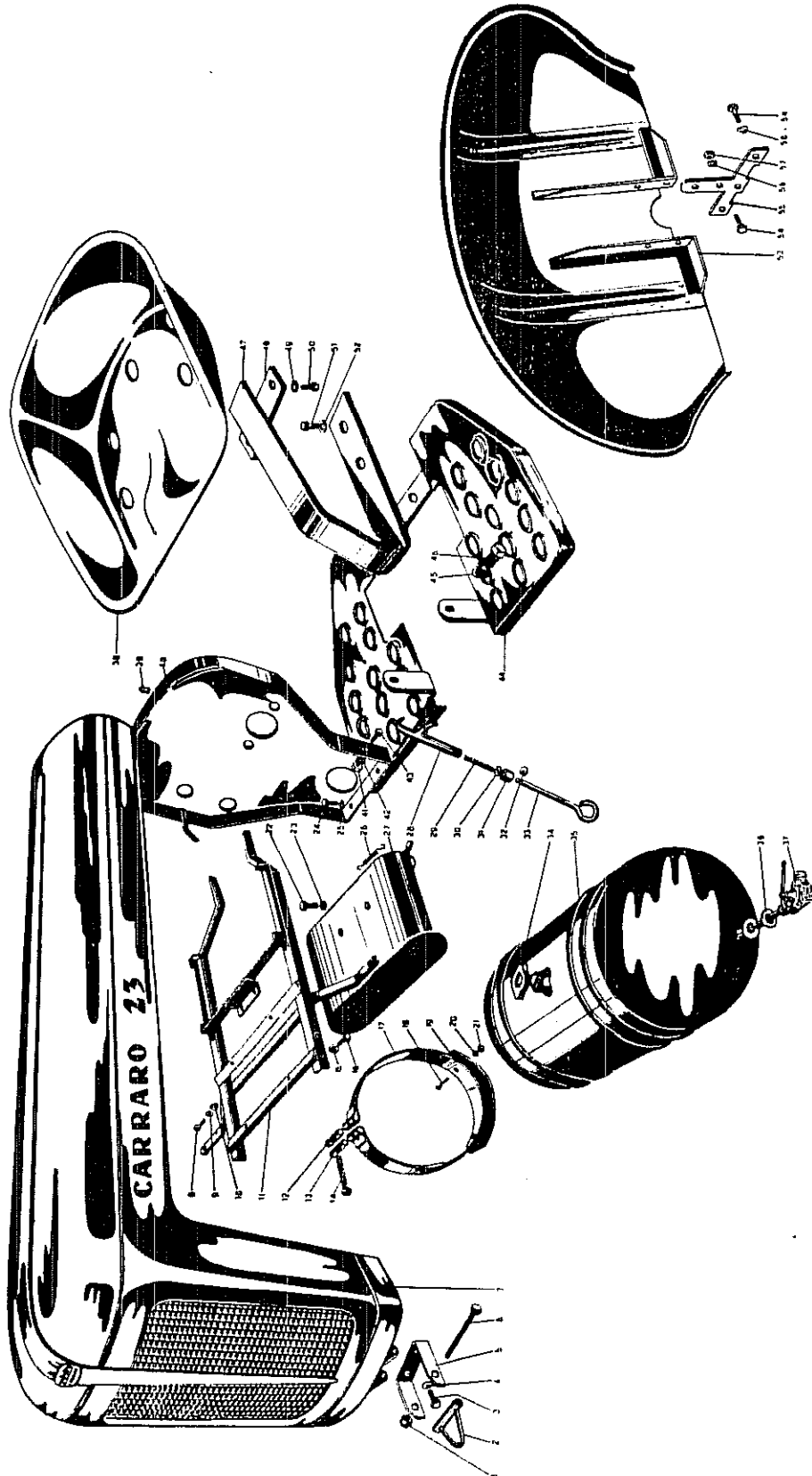


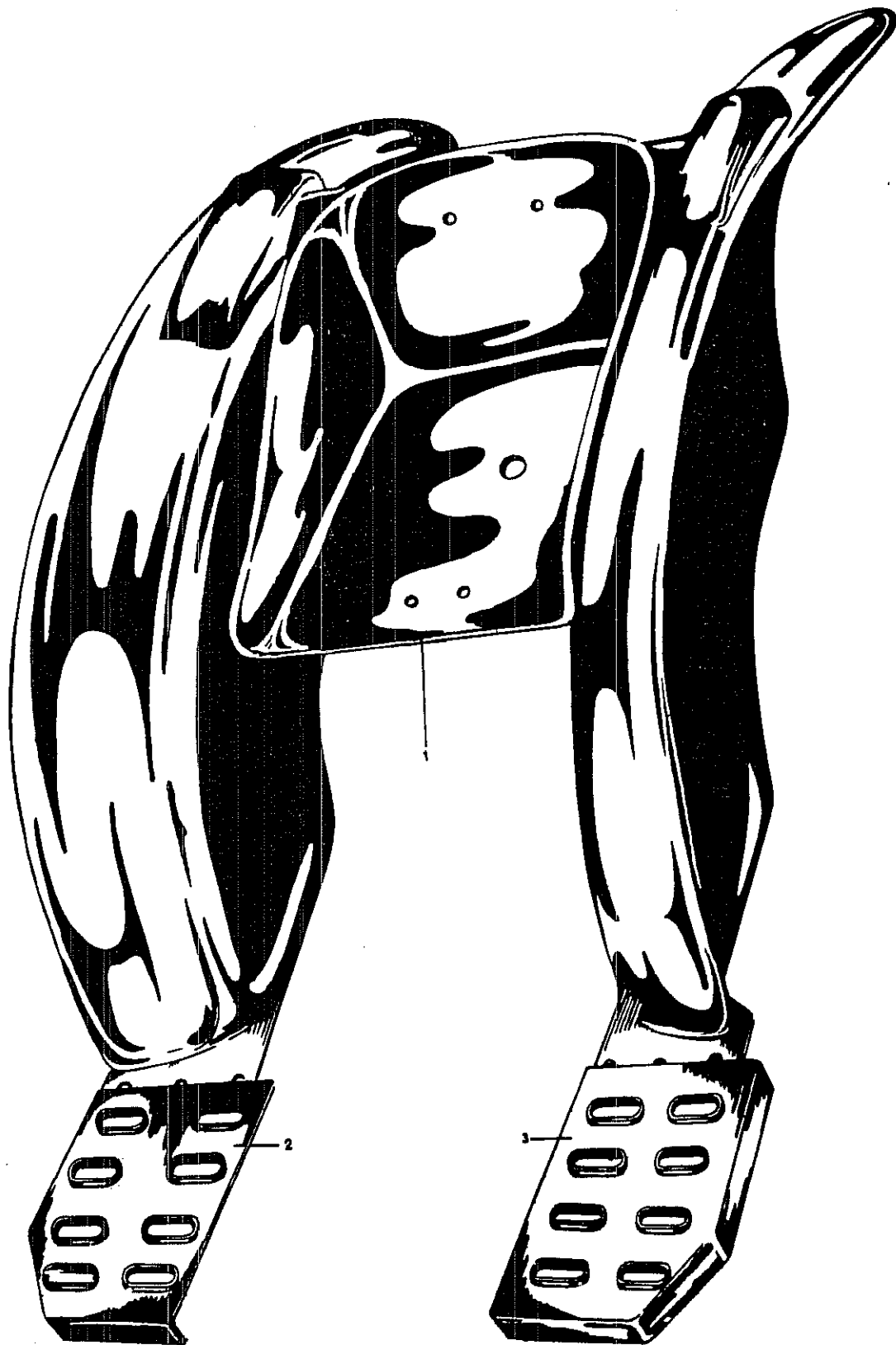


STERZO

TAV. 53

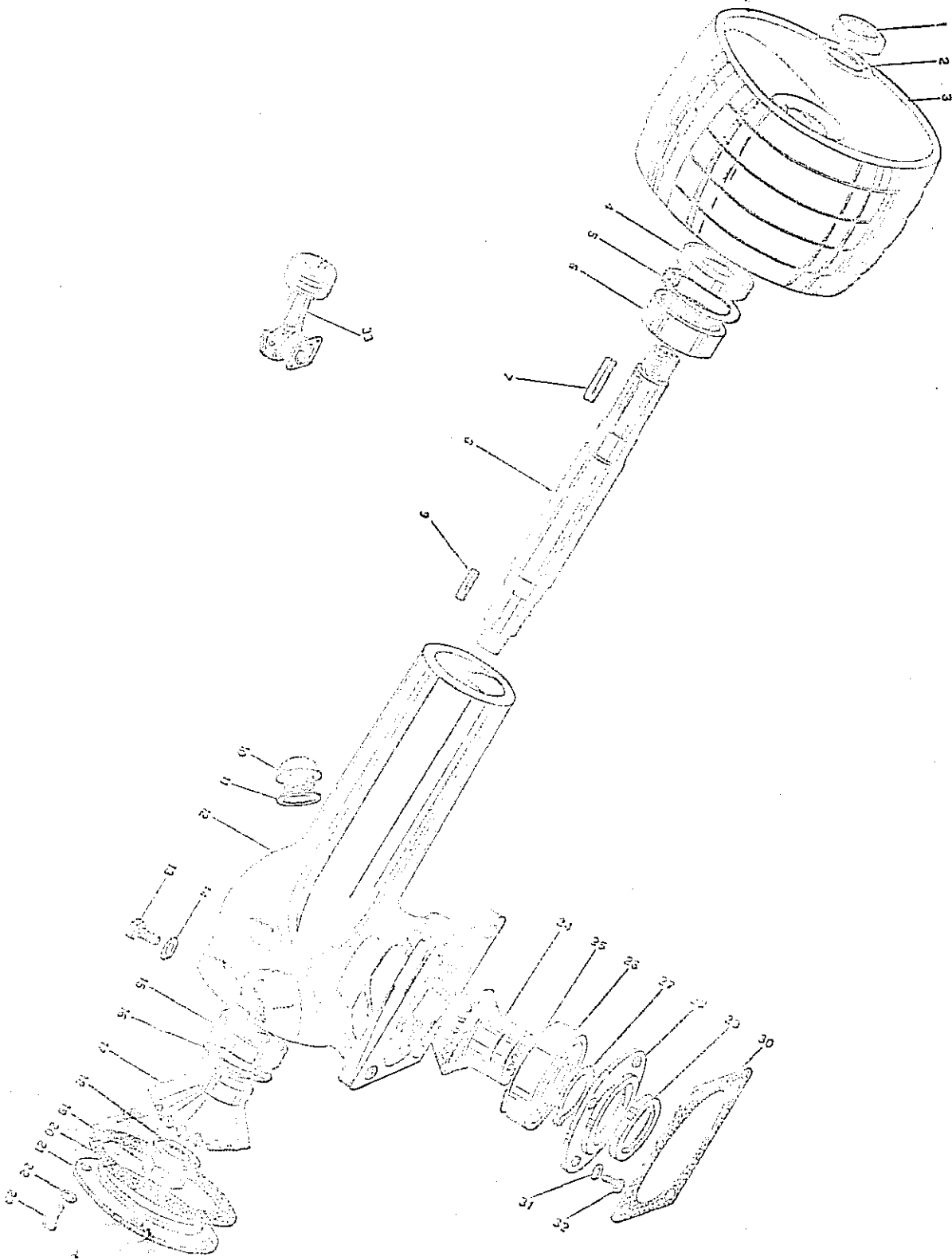








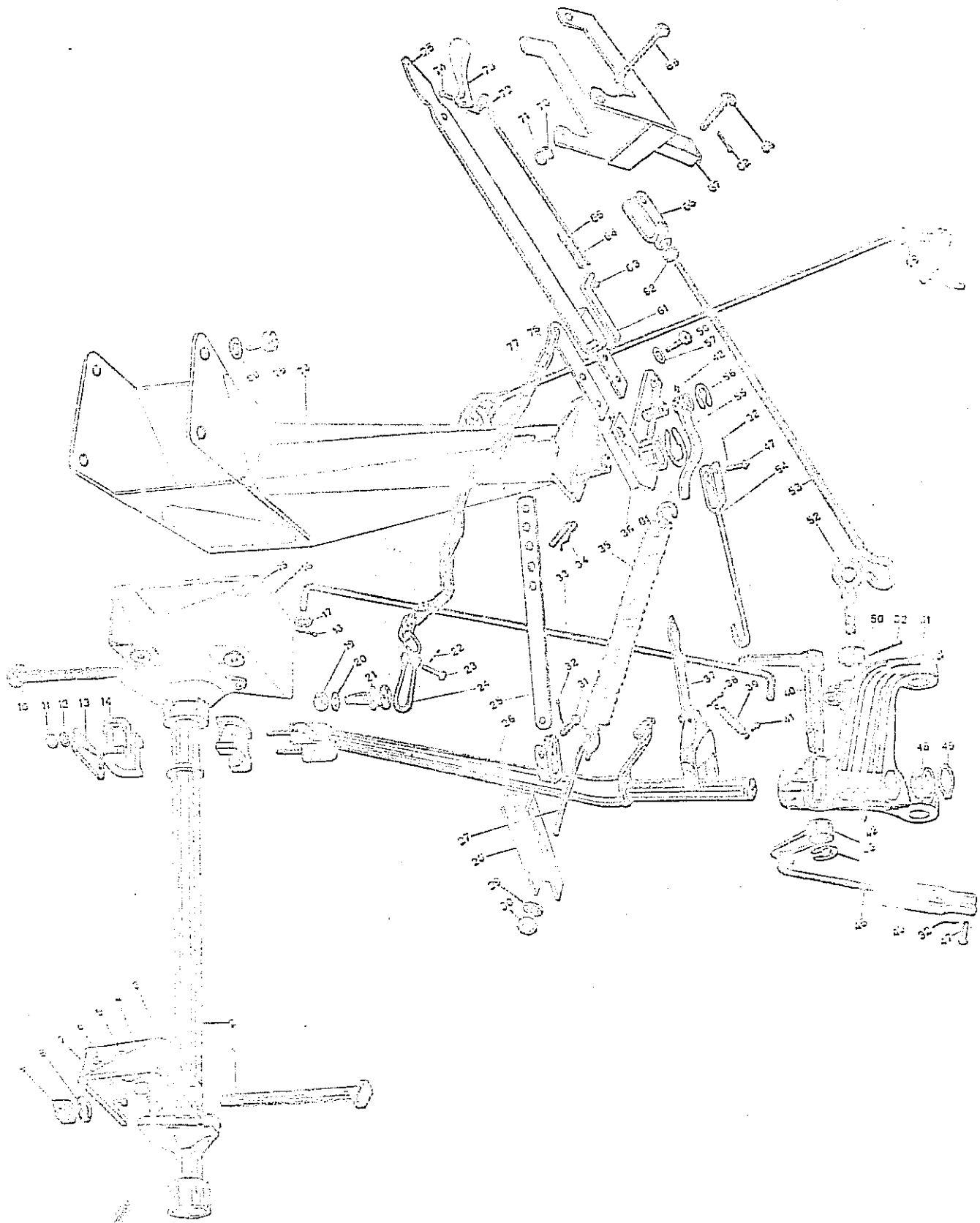
PULEGGIA A SQUADRA





TELAIO BARRA FALCIANTE

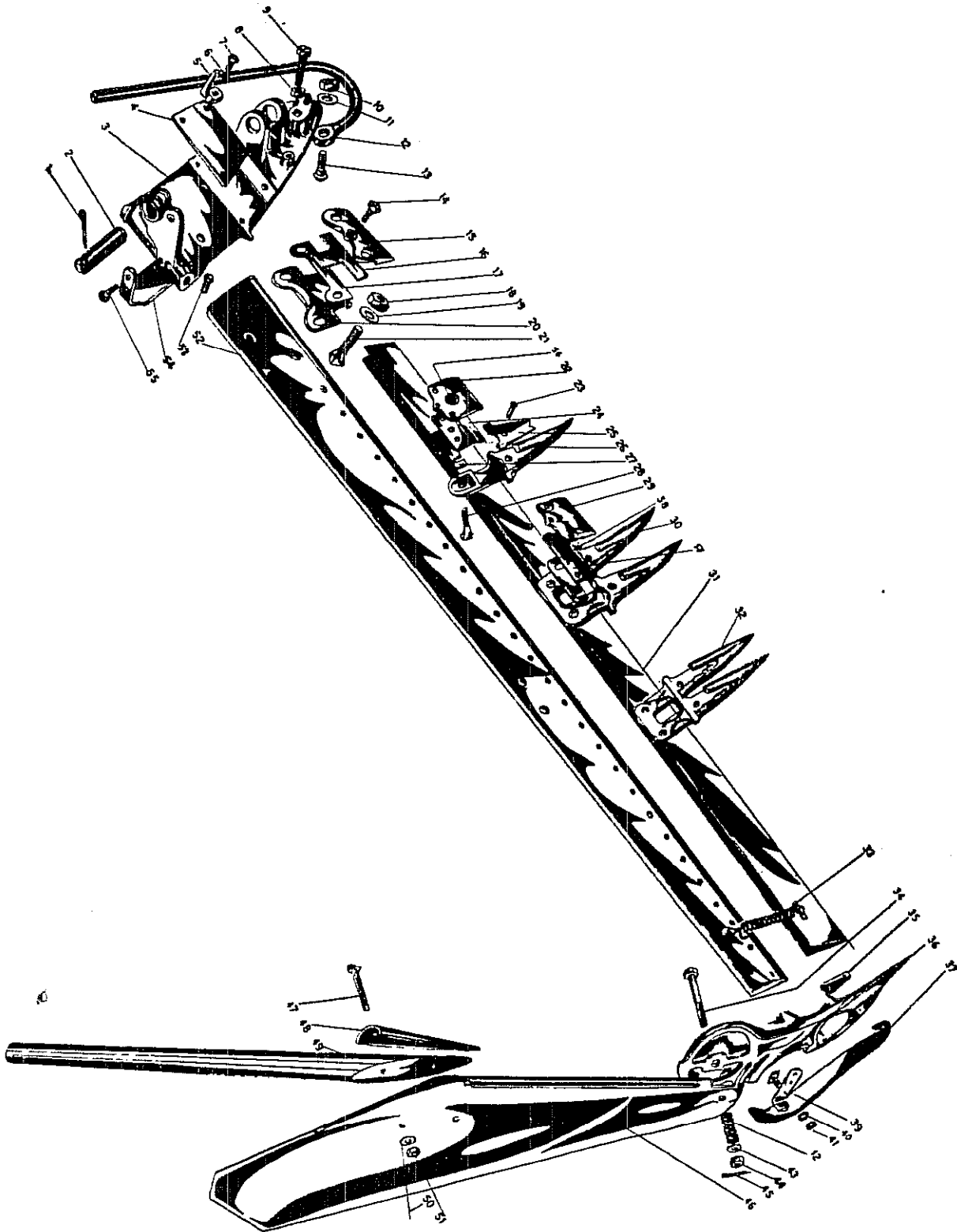
TAV. 40





BARRA PORTADENTI

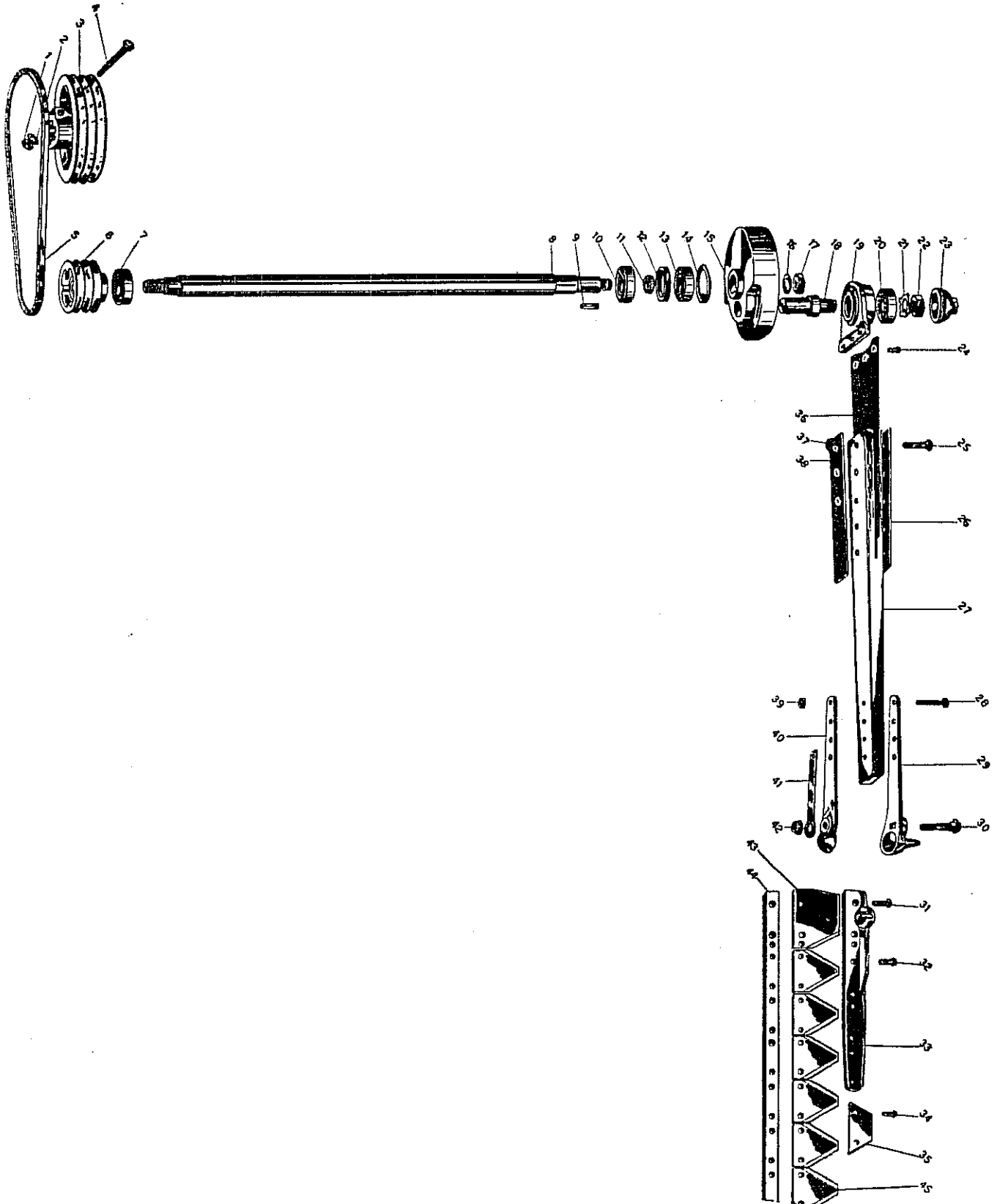
TAV. 41





TRASMISSIONE E LAMA

TAV. 42





SCATOLA DI RIDUZIONE

TAV. 129

